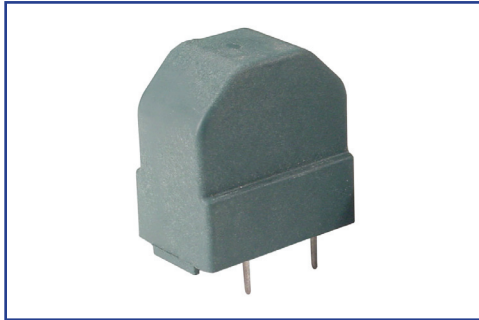


# 2 PHASE COMMON MODE CHOKE



## P504V SERIES



- Current compensated noise suppression common mode chokes
- Vertical mount version
- Rate voltage: 250Vac
- Dielectric withstanding voltage: 1500 Vrms (between windings)
- Operating temperature range: 0°C to +70°C
- Custom design available upon request
- RoHS compliant product

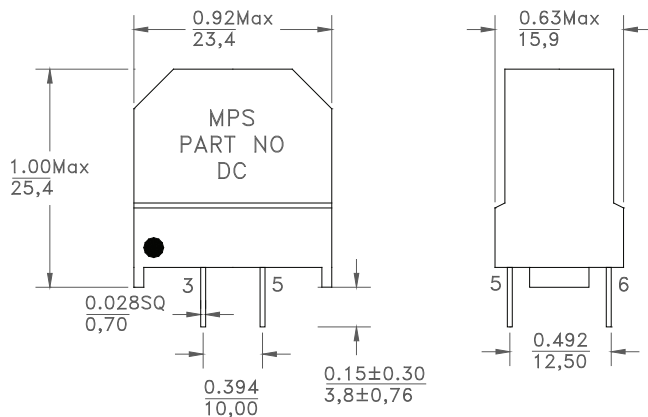
### ELECTRICAL PARAMETERS @ 25°C

Part Number P504V-	OCL (mH ±30%)	Current (A)	DCR (Ω ±20%)	SRF (KHz Typ)
03	3.3	2.5	0.07	700
10	10	1.2	0.30	350
15	15	1.0	0.40	220
27	27	0.7	0.62	180
39	39	0.5	1.12	160
47	47	0.4	1.30	150

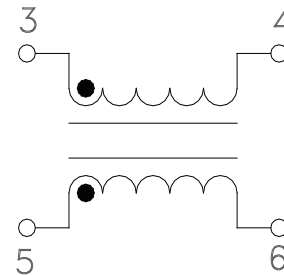
Note:

1. OCL measured: 1KHz, 0.1Vrms
2. Polarity: 3 and 5 are in phase
3. Turns Ratio: 1:1 ±0% (3-4 to 5-6)

### DIMENSIONS



### SCHEMATIC



**Dimensions**

Unless otherwise specified, all tolerances are:  
 inch: .XX : ±0.010 .XXX : ±0.005  
 mm: X.X : ±0.254 X.XX : ±0.13

Product performance is limited to specified parameters. Data is subject to change without prior notice.

Tel: 310-325-1043  
 Fax: 310-325-1044

www.mpsind.com  
 sales@mpsind.com