

SPLIT CORE CURRENT TRANSFORMER



P4018

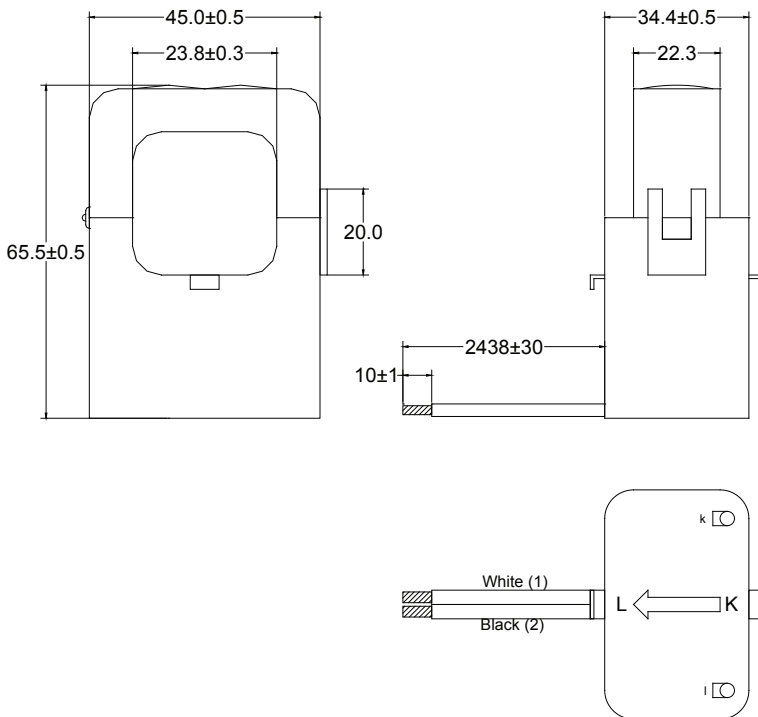


- Current transformer for measuring or monitoring current for control and/or load centers
- Split core design allows easy installation mounting without removing existing cables
- High accuracy of 0.5% for precise current measurement
- Compact size for easy installation in tight spaces
- RoHS Compliant Product
- Custom design available

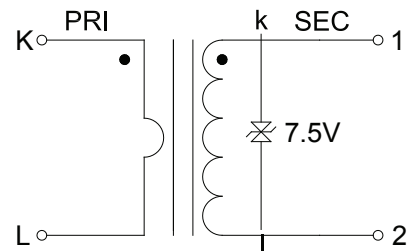
ELECTRICAL PARAMETERS @25°C

Rated Primary Current:	200A NOM (400A MAX)	Protection Level:	7.5V peak
Turns Ratio:	1:2000±1%, (K-L):(1-2)	Dielectric Withstanding Voltage:	4kV, 1mA, 60s
Current Ratio:	200A/100mA	Insulation Resistance:	500Vdc/100MΩ Min
Accuracy @ RL≤10Ω:	0.5%	Impulse Withstand Voltage:	5kV Peak
Phase error @ rated current range:	≤1°	Operating Temperature:	-40 to +85°C
DC Resistance:	85Ω Max	Storage Temperature:	-40 to +90°C

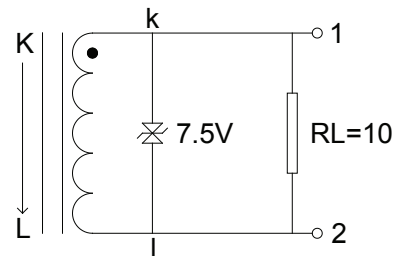
DIMENSIONS (mm)



SCHEMATIC



TEST CIRCUIT



Dimensions
 Unless otherwise specified, all tolerances are:
 inch: XX : ±0.010 .XXX : ±0.005
 mm: X,X : ±0.254 X,XX : ±0.13

Product performance is limited to specified parameters. Data is subject to change without prior notice.

Tel: 310-325-1043
 Fax: 310-325-1044

www.mpsind.com
 sales@mpsind.com