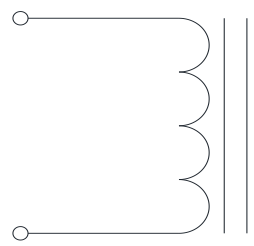


| Rev | Description | By | Date |
|-----|---|-----|-----------|
| B | Released for Production | MIG | 17-Mar-16 |
| C | Corrected pin dimension and DC bias graph | AG | 21-Sep-20 |

ELECTRICAL SPECIFICATIONS @ 25°C

L: 83μH±15% @ 10kHz, 1Vrms
 Isat: ΔL ≤ 10% @ 21 A
 ΔL ≤ 30% @ 39 A
 Irms: ΔT ≤ 20°C @ 21A
 ΔT ≤ 40°C @ 32 A
 DCR: 6.8mΩ Max
 Hipot: 500Vdc, 1mA Max, 5s, wdg to core
 Insulation Class: Class H 180°C
 RoHS Compliant: Yes

SCHEMATIC

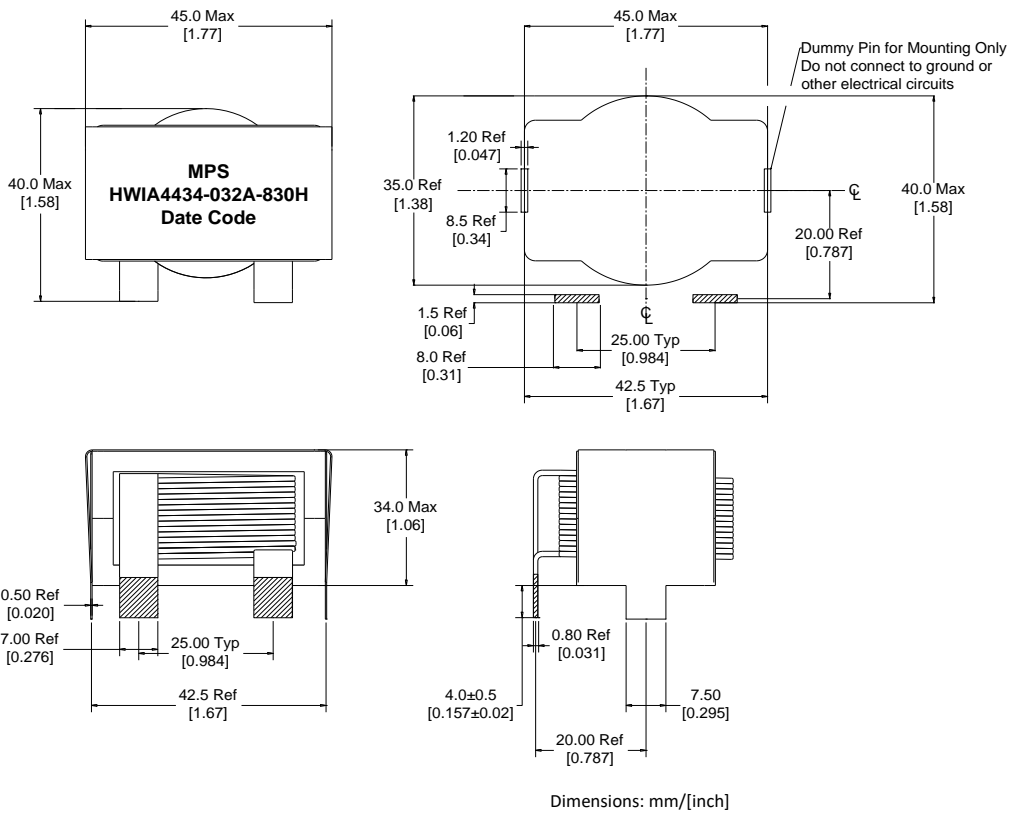


MARKING


MPS
 HWIA4434-032A-830H_REV#
 Date Code

DIMENSIONS

Recommended PCB Layout

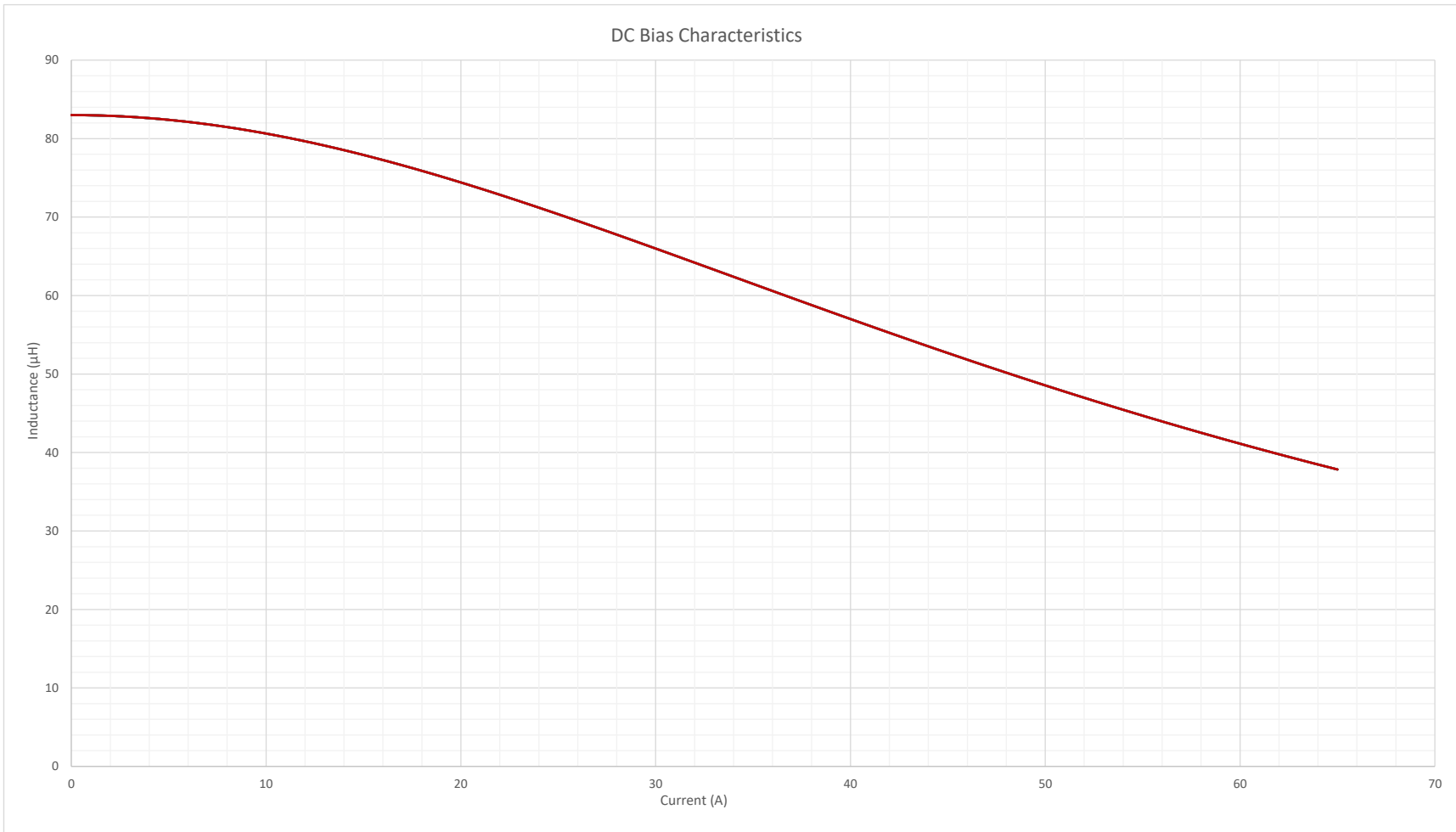


Notice of Proprietary Property
 These drawings and specifications are the property of MPS and shall not be, reproduced, copied or used as the basis of manufacture of sale of apparatus without express written authorization


MPS INDUSTRIES, INC.
www.mpsind.com
 Tel: (310) 325-1043 Fax: (310) 325-1044

| | | | | | | | | |
|---|--|--------------------------|-----------|------------------------|------------------|--|--|-----------------|
| Dimensions Unless otherwise specified .XX ± 0.254mm [.010"] .XXX ± 0.13mm [.005"] | | DRAWN BY: CHECKED BY: | MIG KC | 17-Mar-16 18-Mar-16 | SIZE A | Description Helical Wound Inductor | Part Number HWIA4434-032A-830H | REV C |
| WEIGHT: 250 gms | | | | | | SHEET: 1 OF 2 | | |

| Rev | Description | By | Date |
|-----|---|-----|-----------|
| B | Released for Production | MIG | 17-Mar-16 |
| C | Corrected pin dimension and DC bias graph | AG | 21-Sep-20 |



Notice of Proprietary Property

These drawings and specifications are the property of MPS and shall not be, reproduced, copied or used as the basis of manufacture of sale of apparatus without express written authorization



MPS INDUSTRIES, INC.

www.mpsind.com

Tel: (310) 325-1043 Fax: (310) 325-1044

Description

Helical Wound Inductor

Dimensions
 Unless otherwise specified
 .XX ± 0.254mm [.010"]
 .XXX ± 0.13mm [.005"]

DRAWN BY:
 CHECKED BY:

MIG
 KC

17-Mar-16
 18-Mar-16

SIZE
A

Part Number

HWIA4434-032A-830H

REV

C

SCALE: X:X

WEIGHT: 250 gms

SHEET: 2 OF 2