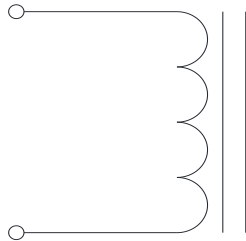


Rev	Description	By	Date
B	Released for Production	MIG	17-Mar-16
C	Corrected pin dimensions and DC bias graph	AG	17-Sep-20

ELECTRICAL SPECIFICATIONS @ 25°C

L: 5.6μH±15% @ 10kHz, 1Vrms
 Isat: ΔL ≤ 10% @105A
 ΔL ≤ 30% @ 218A
 Irms: ΔT ≤ 20°C @ 45A
 ΔT ≤ 40°C @68A
 DCR: 1.3mΩ Max
 Hipot: 500Vdc, 1mA, 5s, wdg to core
 Insulation Class: Class H 180°C
 RoHS Compliant: Yes

SCHEMATIC

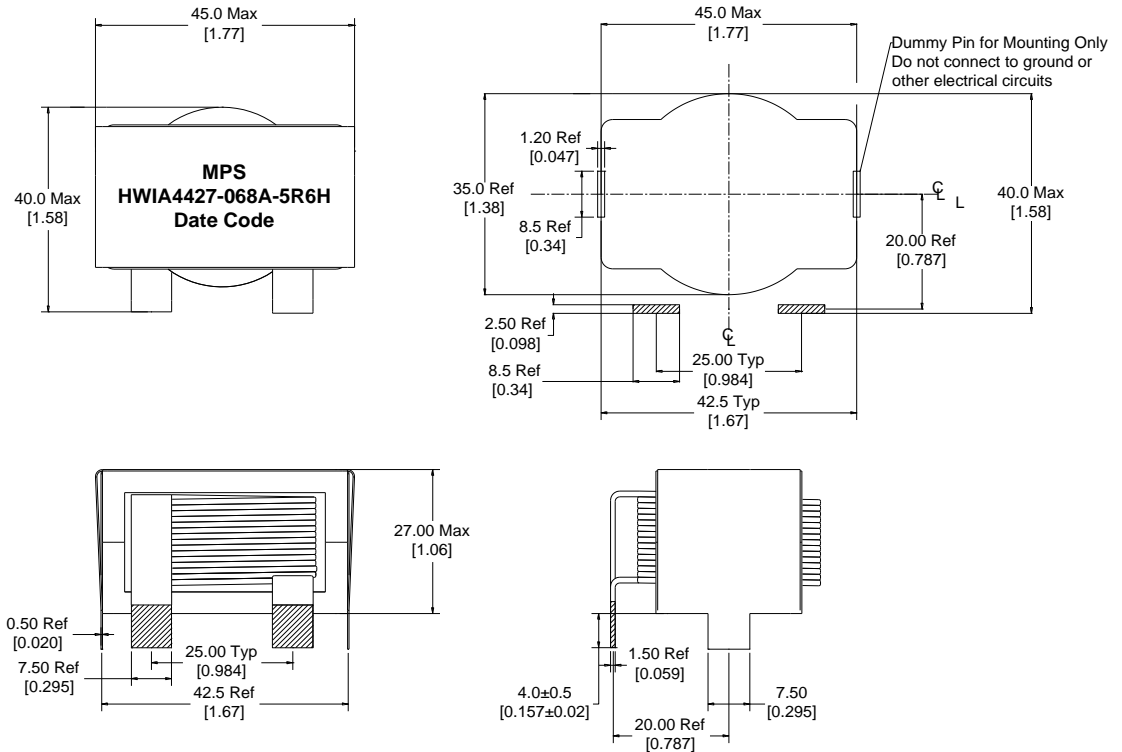


MARKING

MPS
 HWIA4427-068A-5R6H_REV#
 Date Code

DIMENSIONS

Recommended PCB Layout



Dimensions: mm/[inch]

Notice of Proprietary Property

These drawings and specifications are the property of MPS and shall not be, reproduced, copied or used as the basis of manufacture of sale of apparatus without express written authorization



MPS INDUSTRIES, INC.

www.mpsind.com

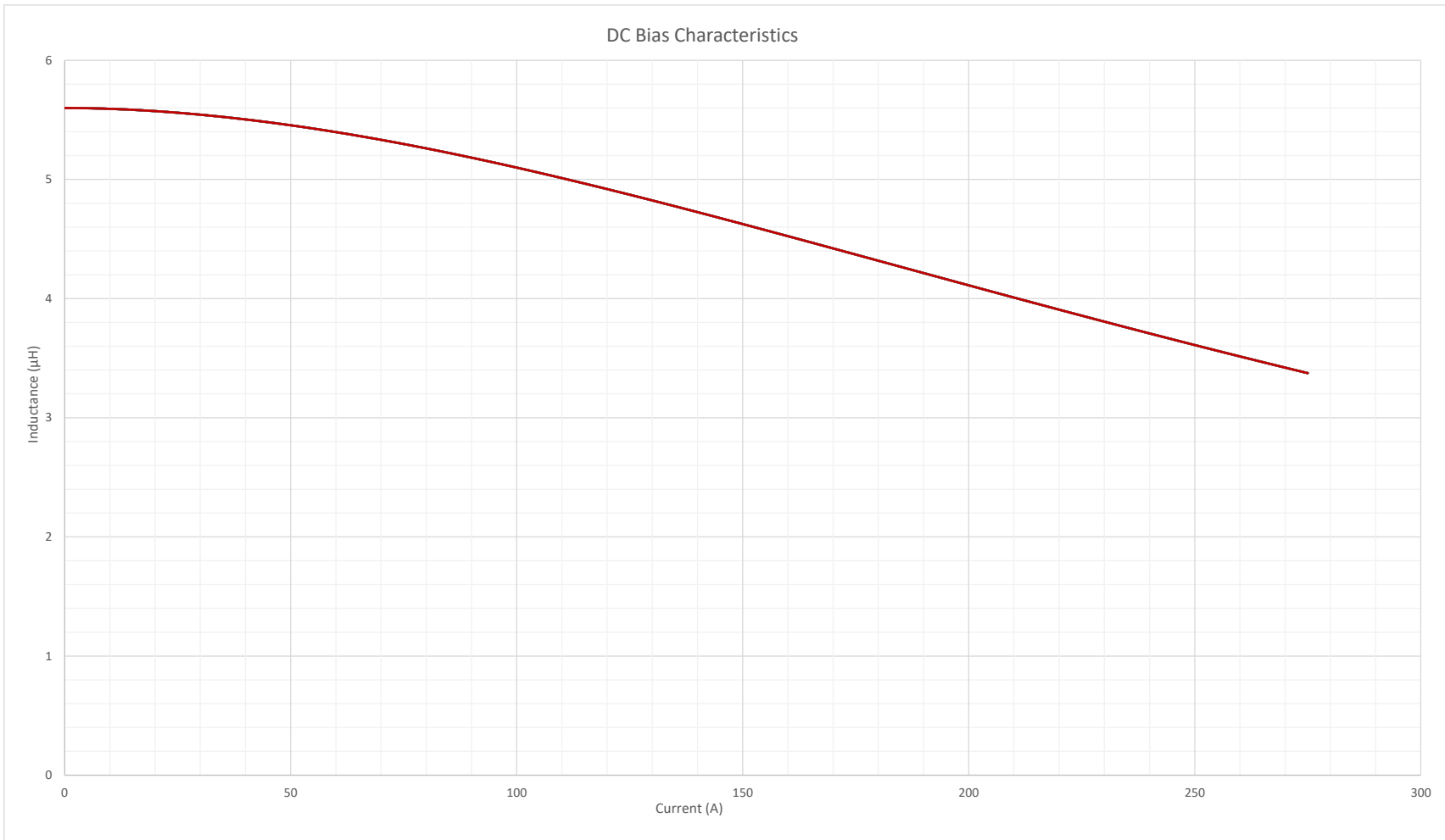
Tel: (310) 325-1043 Fax: (310) 325-1044

Description

Helical Wound Inductor

Dimensions	DRAWN BY:	MIG	17-Mar-16	SIZE	Part Number	REV
Unless otherwise specified .XX ± 0.254mm [.010"] .XXX ± 0.13mm [.005"]	CHECKED BY:	KC	18-Mar-16	A	HWIA4427-068A-5R6H	C
					WEIGHT: 190 gms	SHEET: 1 OF 2

Rev	Description	By	Date
B	Released for Production	MIG	17-Mar-16
C	Corrected pin dimensions and DC bias graph	AG	17-Sep-20



Notice of Proprietary Property

These drawings and specifications are the property of MPS and shall not be reproduced, copied or used as the basis of manufacture of sale of apparatus without express written authorization



MPS INDUSTRIES, INC.

www.mpsind.com

Tel: (310) 325-1043 Fax: (310) 325-1044

Description

Helical Wound Inductor

Dimensions Unless otherwise specified .XX ± 0.254mm [.010"] .XXX ± 0.13mm [.005"]	DRAWN BY:	MIG	17-Mar-16	SIZE	Part Number	REV
	CHECKED BY:	KC	18-Mar-16	A		
					HWIA4427-068A-5R6H	C
			SCALE: X:X	WEIGHT: 190 gms	SHEET: 2 OF 2	