

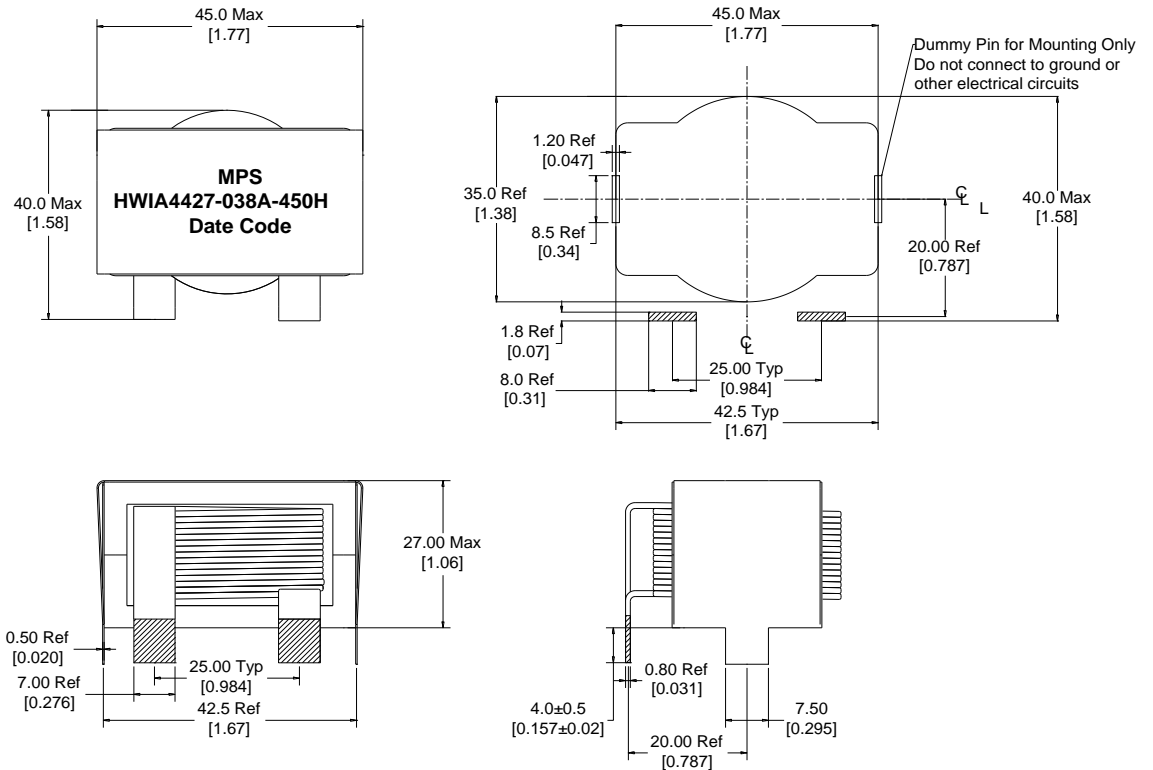
Rev	Description	By	Date
C	Added SRF, Capacitance and changed lead length	KA	6-Dec-18
D	Corrected pin dimensions and DC bias graph	AG	17-Sep-20

ELECTRICAL SPECIFICATIONS @ 25°C

L:	45μH±15% @ 10kHz, 1Vrms
Isat:	ΔL ≤ 10% @25A ΔL ≤ 30% @48A
Irms:	ΔT ≤ 20°C @ 25A ΔT ≤ 40°C @ 38A
DCR:	4.2mΩ Max
SRF:	7.6 MHz Typ
Capacitance:	9.7 pF
Hipot:	500Vdc, 1mA, 5s, wdg to core
Insulation Class:	Class H 180°C
RoHS Compliant:	Yes

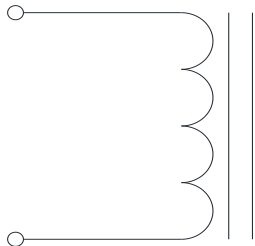
DIMENSIONS

Recommended PCB Layout



Dimensions: mm/[inch]

SCHEMATIC



MARKING

MPS
HWIA4427-038A-450H_REV#
Date Code

Notice of Proprietary Property

These drawings and specifications are the property of MPS and shall not be, reproduced, copied or used as the basis of manufacture of sale of apparatus without express written authorization

Dimensions Unless otherwise specified .XX ± 0.254mm [.010"] .XXX ± 0.13mm [.005"]	DRAWN BY: CHECKED BY:	MIG KC	17-Mar-16 18-Mar-16	SIZE A	Description Helical Wound Inductor	Part Number HWIA4427-038A-450H	REV D
WEIGHT: 190 gms					SHEET: 1 OF 2		

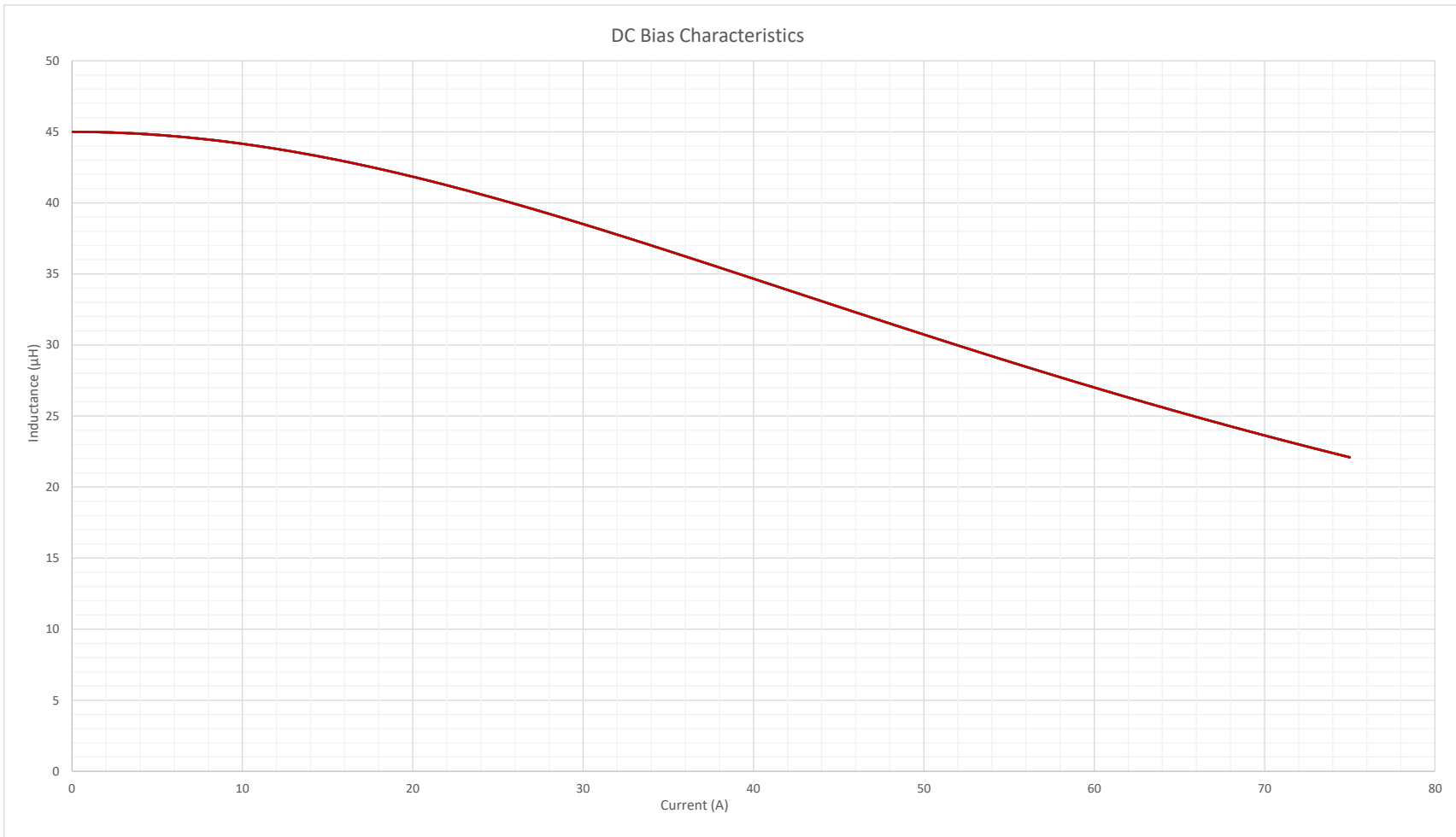


MPS INDUSTRIES, INC.

www.mpsind.com

Tel: (310) 325-1043 Fax: (310) 325-1044

Rev	Description	By	Date
C	Added SRF, Capacitance and changed lead length	KA	6-Dec-18
D	Corrected pin dimensions and DC bias graph	AG	17-Sep-20



Notice of Proprietary Property

These drawings and specifications are the property of MPS and shall not be reproduced, copied or used as the basis of manufacture of sale of apparatus without express written authorization



MPS INDUSTRIES, INC.

www.mpsind.com

Tel: (310) 325-1043 Fax: (310) 325-1044

Description

Helical Wound Inductor

Dimensions
 Unless otherwise specified
 .XX ± 0.254mm [.010"]
 .XXX ± 0.13mm [.005"]

DRAWN BY:
 CHECKED BY:

MIG
 KC

17-Mar-16
 18-Mar-16

SIZE
A

Part Number

HWIA4427-038A-450H

REV

D

SCALE: X:X

WEIGHT: 190 gms

SHEET: 2 OF 2