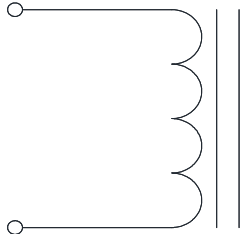


Rev	Description	By	Date
A	Released for Production	KLC	6-Jul-16

### ELECTRICAL SPECIFICATIONS @ 25°C

L:	4.7 $\mu$ H $\pm$ 10% @ 500kHz, 0.1Vrms
Isat:	$\Delta$ L $\leq$ 10% @ 63 A $\Delta$ L $\leq$ 20% @ 68 A $\Delta$ L $\leq$ 30% @ 70 A
Irms:	$\Delta$ T $\leq$ 20°C @ 20 A $\Delta$ T $\leq$ 40°C @ 28 A
DCR (MAX):	2.6 m $\Omega$ Max
DCR (NOMINAL):	2.3 m $\Omega$ Nom
SRF (TYP)	28 MHz
Capacitance (TYP)	6.9 pF
Hipot:	500 Vdc, 1 mA, 5 sec, wdg to core
Insulation Class:	Class H 180 °C
RoHS Compliant:	Yes

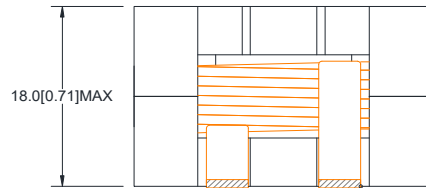
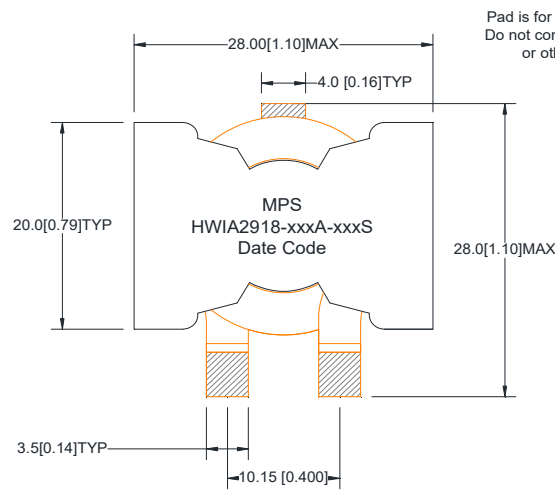
### SCHEMATIC



### MARKING

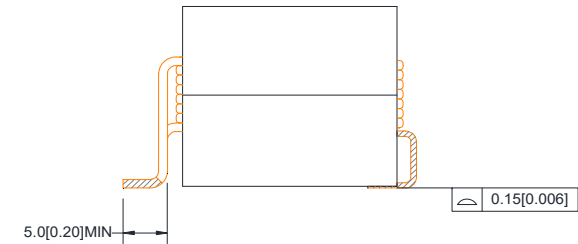
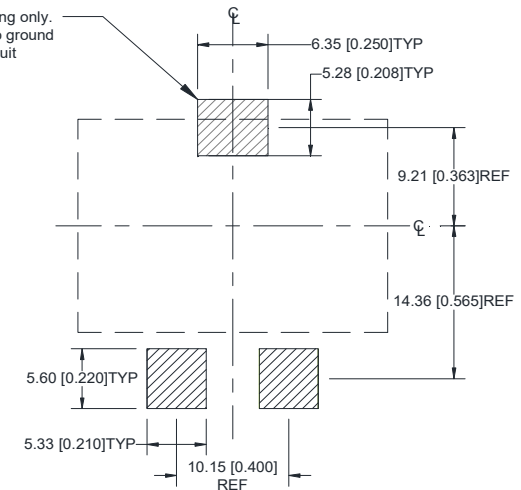
MPS  
HWIA2918-028A-4R7S  
Date Code

### Dimensions: mm[inch]



### Recommended PCB Layout

Pad is for mounting only.  
Do not connect to ground  
or other circuit



#### Notice of Proprietary Property

These drawings and specifications are the property of MPS and shall not be reproduced, copied or used as the basis of manufacture of sale of apparatus without express written authorization



MPS INDUSTRIES, INC.

[www.mpsind.com](http://www.mpsind.com)

Tel: (310) 325-1043 Fax: (310) 325-1044

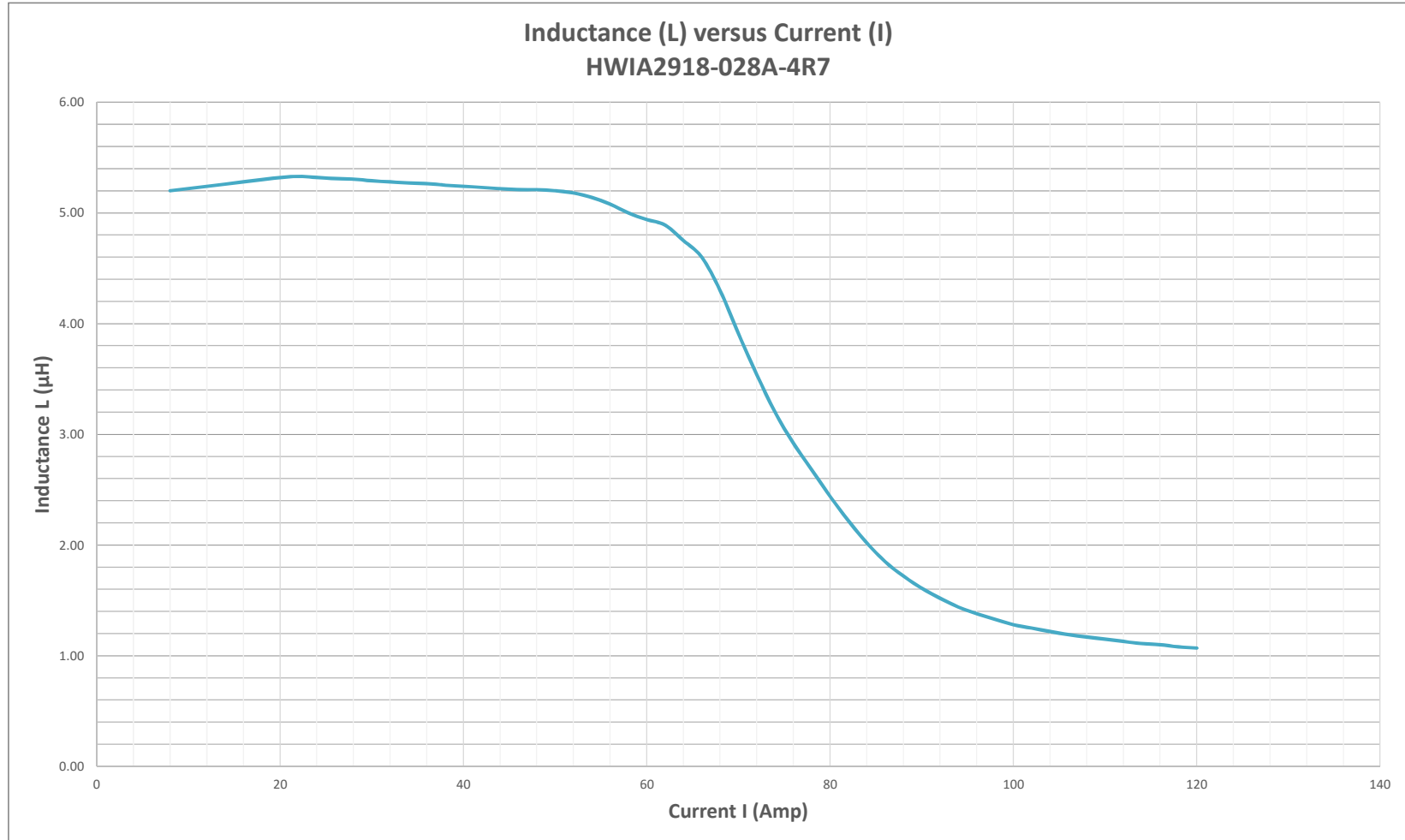
Description

**Helical Wound Inductor**

<b>Dimensions</b> Unless otherwise specified .XX $\pm$ 0.51 [0.020"] .XXX $\pm$ 0.254 [0.010"]	DRAWN BY: CHECKED BY:	KLC AG	30-Jun-16 6-Jul-16	SIZE <b>A</b>	Part Number <b>HWIA2918-028A-4R7S</b>	REV <b>A</b>
	WEIGHT: 38 gms					SHEET: 1 OF 2

Rev	Description	By	Date
A	Released for Production	KLC	6-Jul-16

**DC Bias Curve**



**Notice of Proprietary Property**  
 These drawings and specifications are the property of MPS and shall not be reproduced, copied or used as the basis of manufacture of sale of apparatus without express written authorization



**MPS INDUSTRIES, INC.**  
[www.mpsind.com](http://www.mpsind.com)  
 Tel: (310) 325-1043 Fax: (310) 325-1044

Description		<b>Helical Wound Inductor</b>	
Part Number	<b>HWIA2918-028A-4R7S</b>	REV	<b>A</b>
SHEET: 2 OF 2			

<b>Dimensions</b> Unless otherwise specified .XX ± 0.51[0.020"] .XXX ± 0.254[0.010"]	DRAWN BY: CHECKED BY:	KLC AG	30-Jun-16 6-Jul-16	SIZE <b>A</b>
---	--------------------------	-----------	-----------------------	------------------