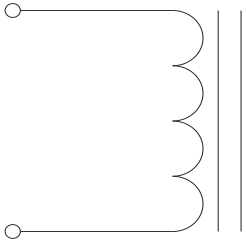


| Rev | Description                               | By  | Date      |
|-----|---|-----|-----------|
| B   | Released for Production                   | MIG | 17-Mar-16 |
| C   | Corrected pin dimension and DC bias graph | AG  | 21-Sep-20 |

### ELECTRICAL SPECIFICATIONS @ 25°C

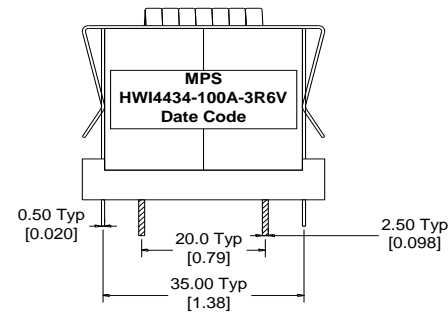
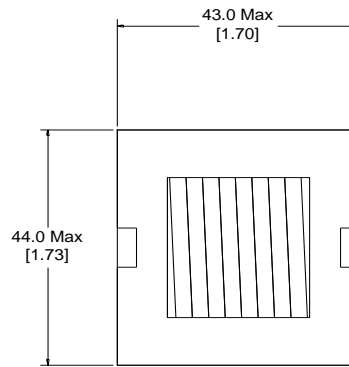
|                   |                                     |
|-------------------|-------------------------------------|
| L:                | 3.6±15% @ 10kHz, 1Vrms              |
| Isat:             | ΔL≤10% @ 143A<br>ΔL≤30% @ 295A      |
| Irms:             | ΔT ≤ 20°C @ 66A<br>ΔT ≤ 40°C @ 100A |
| DCR:              | 0.7mΩ Max                           |
| Hipot:            | 500Vdc, 1mA, 5s, wdg to core        |
| Insulation Class: | Class H 180°C                       |
| RoHS Compliant:   | Yes                                 |

### SCHEMATIC



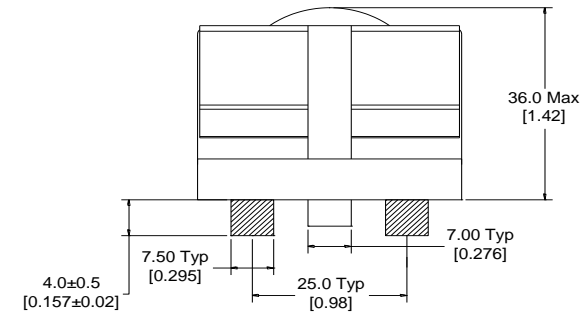
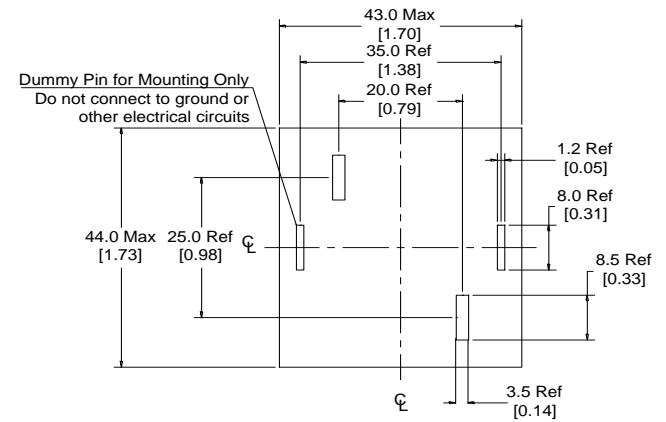
### MARKING

MPS  
HWI4434-100A-3R6V\_REV#  
Date Code



### DIMENSIONS

### Recommended PCB Layout



Dimensions: mm/[inch]

### Notice of Proprietary Property

These drawings and specifications are the property of MPS and shall not be, reproduced, copied or used as the basis of manufacture of sale of apparatus without express written authorization

|   |             |     |           |      |                 |               |
|---|-------------|-----|-----------|------|-----------------|---------------|
| <b>Dimensions</b><br>Unless otherwise specified<br>.XX ± 0.254mm [.010"]<br>.XXX ± 0.13mm [.005"] | DRAWN BY:   | MIG | 17-Mar-16 | SIZE | Part Number     | REV           |
|   | CHECKED BY: | KC  | 18-Mar-16 |      |                 |               |
|   |             |     |           |      | WEIGHT: 260 gms | SHEET: 1 OF 2 |



MPS INDUSTRIES, INC.

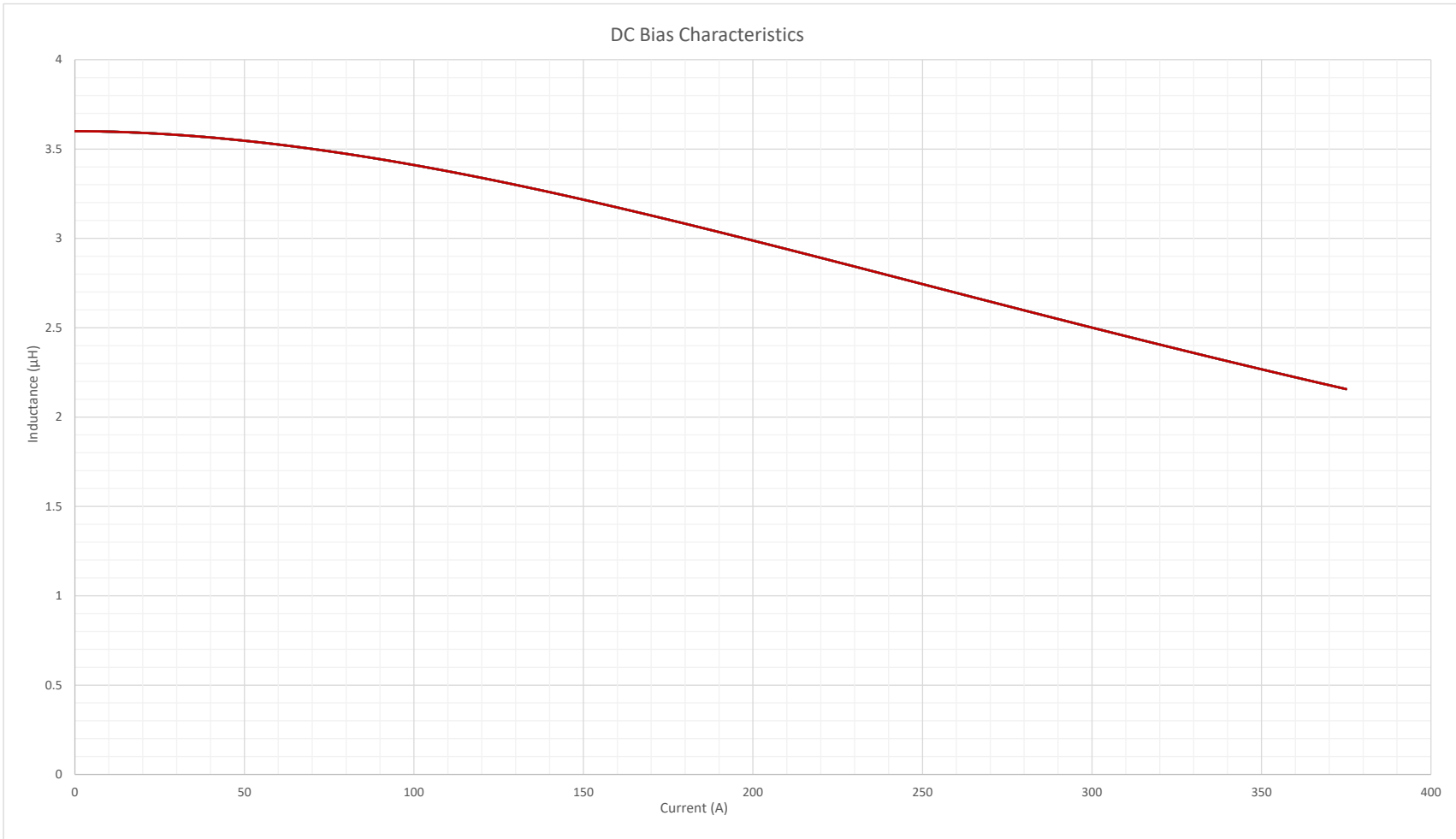
[www.mpsind.com](http://www.mpsind.com)

Tel: (310) 325-1043 Fax: (310) 325-1044

Description

**Helical Wound Inductor**

| Rev | Description                               | By  | Date      |
|-----|---|-----|-----------|
| B   | Released for Production                   | MIG | 17-Mar-16 |
| C   | Corrected pin dimension and DC bias graph | AG  | 21-Sep-20 |



**Notice of Proprietary Property**

These drawings and specifications are the property of MPS and shall not be reproduced, copied or used as the basis of manufacture or sale of apparatus without express written authorization



**MPS INDUSTRIES, INC.**

www.mpsind.com

Tel: (310) 325-1043 Fax: (310) 325-1044

Description

**Helical Wound Inductor**

**Dimensions**  
 Unless otherwise specified  
 .XX ± 0.254mm [.010"]  
 .XXX ± 0.13mm [.005"]

DRAWN BY:  
 CHECKED BY:

MIG  
 KC  
 17-Mar-16  
 18-Mar-16

SIZE  
**A**

Part Number

**HWI4434-100A-3R6V**

REV

**C**

SCALE: X:X

WEIGHT: 260 gms

SHEET: 2 OF 2