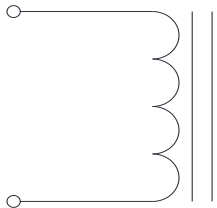


Rev	Description	By	Date
C	Added SRF, Capacitance to Electrical specifications and changed lead length	KA	15-Jul-19
D	Updated pin out dimensions	AG	22-Jan-20

ELECTRICAL SPECIFICATIONS @ 25°C

L: 14H±15% @ 10kHz, 1Vrms
 Isat: ΔL ≤ 10% @50A
 ΔL ≤ 30% @96A
 Irms: ΔT ≤ 20°C @ 52A
 ΔT ≤ 40°C @ 80A
 DCR: 1.1mΩ Max
 SRF: 20 MHz Typ
 Capacitance: 4 pF Typ
 Hipot: 500Vdc, 1mA, 5s, wdg to core
 Insulation Class: Class H 180°C
 RoHS Compliant: Yes

SCHEMATIC

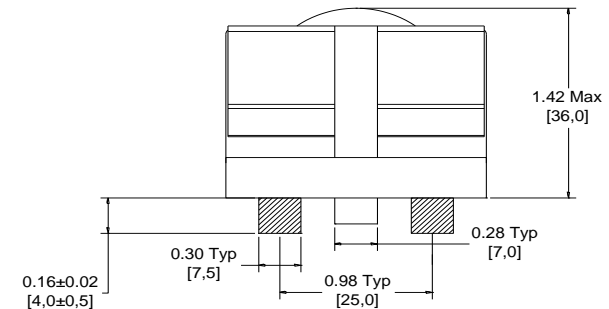
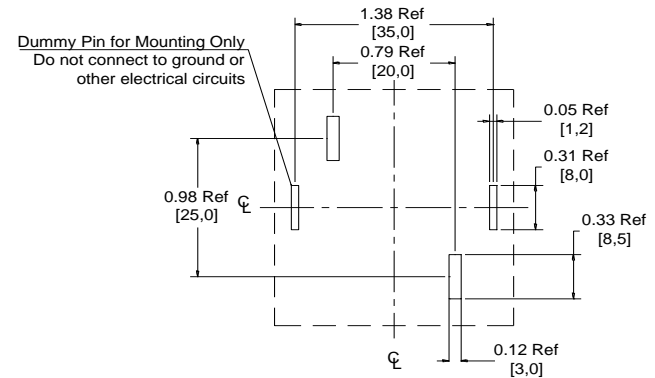
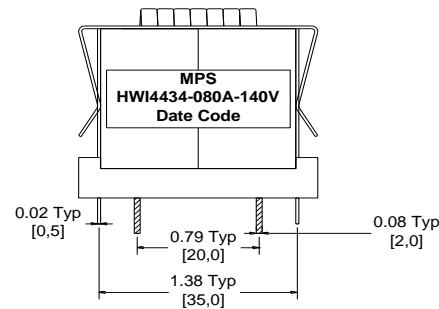
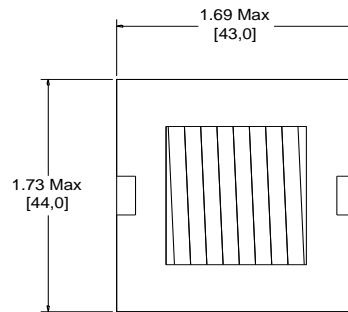


MARKING

MPS
 HWI4434-080A-140V_Rev#
 Date Code

DIMENSIONS

Recommended PCB Layout



Dimensions: inch/[mm]

Notice of Proprietary Property

These drawings and specifications are the property of MPS and shall not be, reproduced, copied or used as the basis of manufacture of sale of apparatus without express written authorization

Dimensions Unless otherwise specified .XX ± .010" [0,254mm] .XXX ± .005 [0,13mm]		DRAWN BY: CHECKED BY:	MIG KC	17-Mar-16 18-Mar-16	SIZE A	Part Number HWI4434-080A-140V WEIGHT: 260 gms	REV D
--	--	--------------------------	-----------	------------------------	------------------	--	-----------------



MPS INDUSTRIES, INC.

www.mpsind.com

Tel: (310) 325-1043 Fax: (310) 325-1044

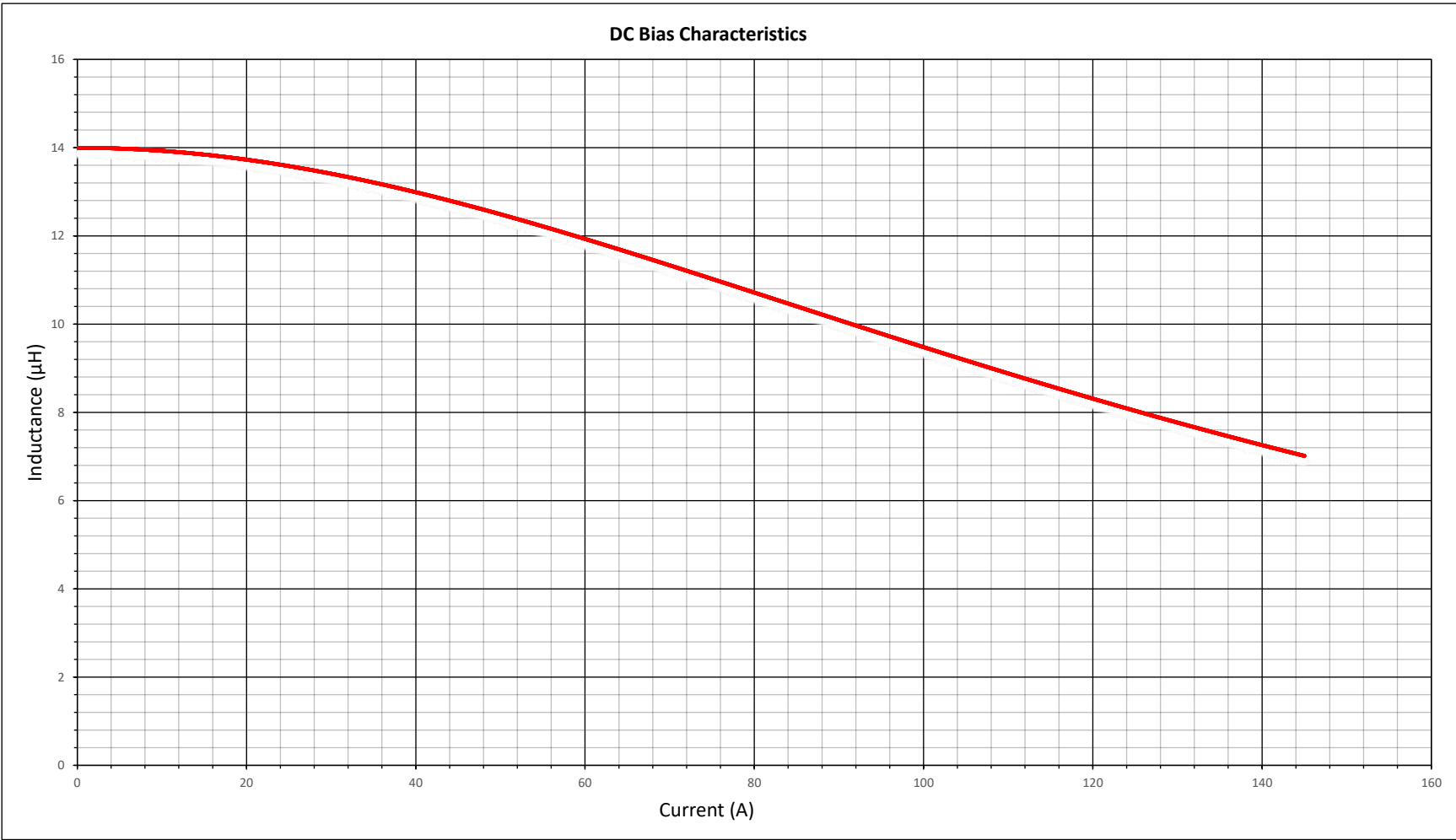
Description

Helical Wound Inductor

HWI4434-080A-140V

SHEET: 1 OF 2

Rev	Description	By	Date
C	Added SRF, Capacitance to Electrical specifications and changed lead length	KA	15-Jul-19
D	Updated pin out dimensions	AG	22-Jan-20



Notice of Proprietary Property
 These drawings and specifications are the property of MPS and shall not be reproduced, copied or used as the basis of manufacture or sale of apparatus without express written authorization



MPS INDUSTRIES, INC.
 www.mpsind.com
 Tel: (310) 325-1043 Fax: (310) 325-1044

Description		Helical Wound Inductor	
Part Number	HWI4434-080A-140V		REV
SCALE: X:X	WEIGHT: 260 gms	SHEET: 2 OF 2	D

Dimensions Unless otherwise specified .XX ± .010" [0,254mm] .XXX ± .005 [0,13mm]	DRAWN BY: CHECKED BY:	MIG KC	17-Mar-16 18-Mar-16	SIZE A
--	--------------------------	-----------	------------------------	------------------