

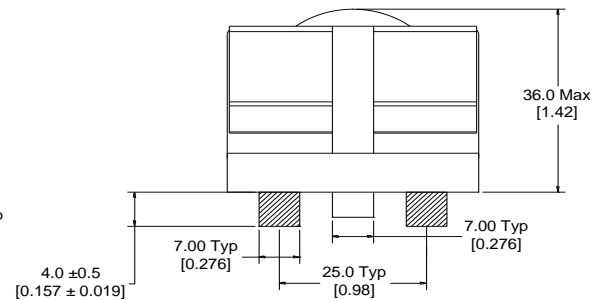
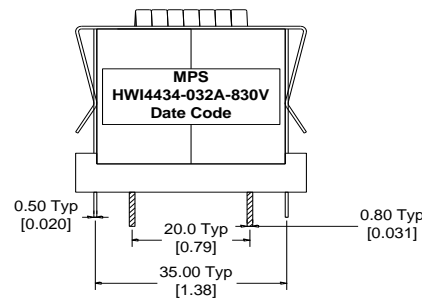
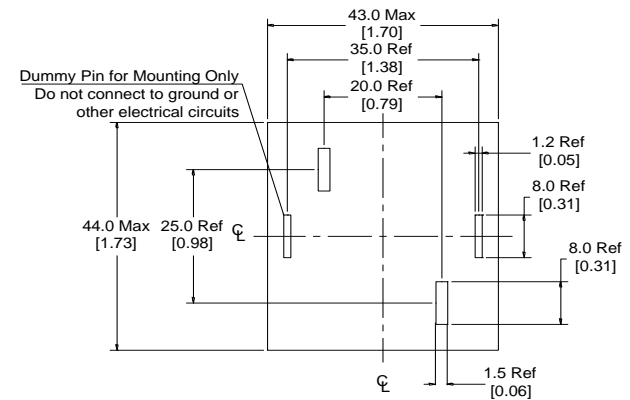
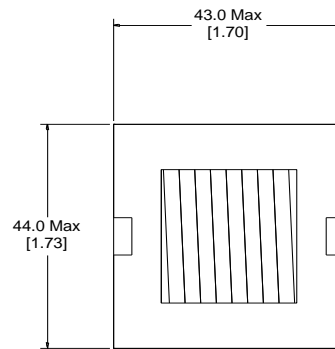
Rev	Description	By	Date
C	Added SRF, Capacitance in Electrical specifications and changed lead length	KA	15-Jul-19
D	Corrected pin dimension and DC bias graph	AG	21-Sep-20

### ELECTRICAL SPECIFICATIONS @ 25°C

L: 83μH±15% @ 10kHz, 1Vrms  
 Isat: ΔL ≤ 10% @ 21 A  
       ΔL ≤ 30% @ 39 A  
 Irms: ΔT ≤ 20°C @ 21A  
       ΔT ≤ 40°C @ 32 A  
 DCR: 6.8mΩ Max  
 SRF: 6 Mhz Typ  
 Capacitance: 8 pF Typ  
 Hipot: 500Vdc, 1mA Max, 5s, wdg to core  
 Insulation Class: Class H 180°C  
 RoHS Compliant: Yes

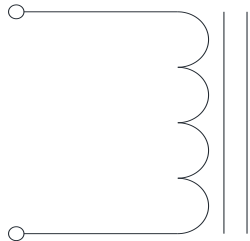
### DIMENSIONS

#### Recommended PCB Layout



Dimensions: mm/[inch]

### SCHEMATIC



### MARKING

MPS  
 HWI4434-032A-830V\_REV#  
 Date Code

#### Notice of Proprietary Property

These drawings and specifications are the property of MPS and shall not be, reproduced, copied or used as the basis of manufacture or sale of apparatus without express written authorization

<b>Dimensions</b> Unless otherwise specified .XX ± 0.254mm [.010"] .XXX ± 0.13mm [.005"]		DRAWN BY: CHECKED BY:	MIG KC	17-Mar-16 18-Mar-16	SIZE <b>A</b>	Part Number <b>HWI4434-032A-830V</b> WEIGHT: 260 gms	REV <b>D</b>
---	--	--------------------------	-----------	------------------------	------------------	--	-----------------



MPS INDUSTRIES, INC.

[www.mpsind.com](http://www.mpsind.com)

Tel: (310) 325-1043 Fax: (310) 325-1044

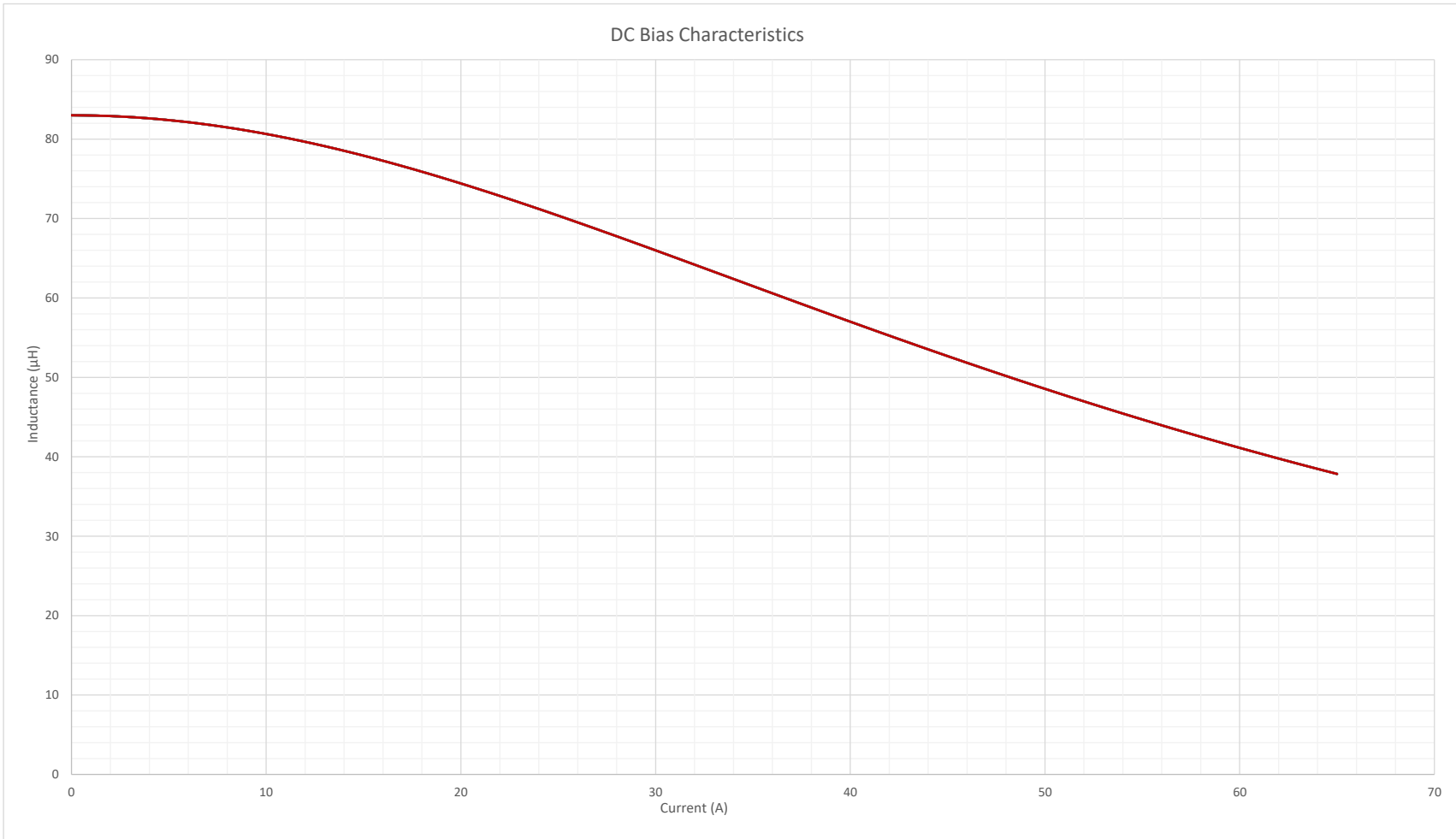
Description

**Helical Wound Inductor**

WEIGHT: 260 gms

SHEET: 1 OF 2

Rev	Description	By	Date
C	Added SRF, Capacitance in Electrical specifications and changed lead length	KA	15-Jul-19
D	Corrected pin dimension and DC bias graph	AG	21-Sep-20



**Notice of Proprietary Property**

These drawings and specifications are the property of MPS and shall not be, reproduced, copied or used as the basis of manufacture of sale of apparatus without express written authorization



**MPS INDUSTRIES, INC.**

www.mpsind.com

Tel: (310) 325-1043 Fax: (310) 325-1044

Description

**Helical Wound Inductor**

**Dimensions**  
Unless otherwise specified  
.XX ± 0.254mm [.010"]  
.XXX ± 0.13mm [.005"]

DRAWN BY:  
CHECKED BY:

MIG  
KC  
17-Mar-16  
18-Mar-16

SIZE  
**A**

Part Number

**HWI4434-032A-830V**

REV

**D**

SCALE: X:X

WEIGHT: 260 gms

SHEET: 2 OF 2