

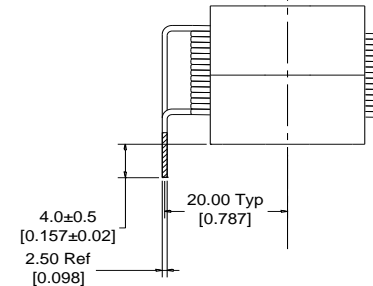
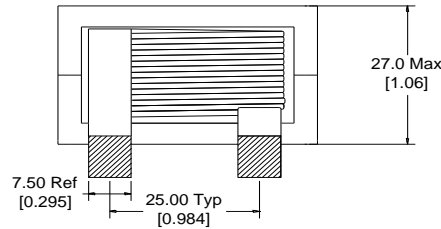
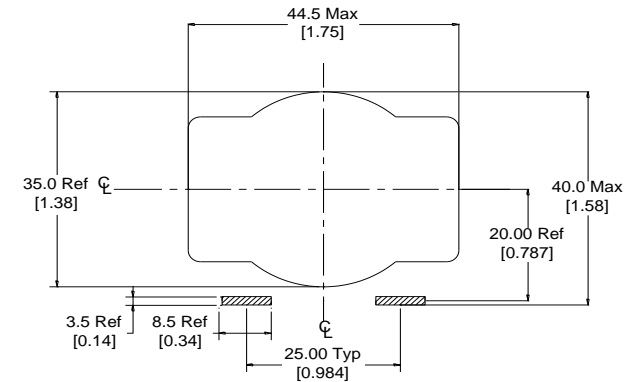
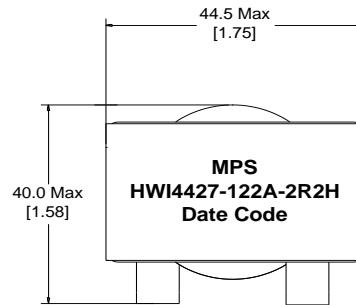
Rev	Description	By	Date
C	Changed Lead length added SRF and Capacitance	KA	31-Aug-18
D	Corrected pin dimensions and DC bias graph	AG	17-Sep-20

ELECTRICAL SPECIFICATIONS @ 25°C

L:	2.2μH±15% @ 10kHz, 1Vrms
Isat:	ΔL ≤ 10% @ 174A ΔL ≤ 30% @ 308A
Irms:	ΔT ≤ 20°C @ 80A ΔT ≤ 40°C @ 122A
DCR:	0.4mΩ Max
Hipot:	500Vdc, 1mA, 5s, wdg to core
SRF:	50 MHz
C:	4.5 pF
Insulation Class:	Class H 180°C
RoHS Compliant:	Yes

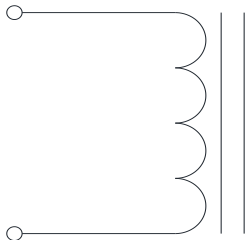
DIMENSIONS

Recommended PCB Layout



Dimensions: mm/[inch]

SCHEMATIC



MARKING

MPS
HWI4427-122A-2R2H_REV#
Date Code

Notice of Proprietary Property

These drawings and specifications are the property of MPS and shall not be reproduced, copied or used as the basis of manufacture or sale of apparatus without express written authorization

Dimensions Unless otherwise specified .XX ± 0.254mm [.010"] .XXX ± 0.13mm [.005"]	DRAWN BY: CHECKED BY:	MIG KC	17-Mar-16 18-Mar-16
---	--------------------------	-----------	------------------------



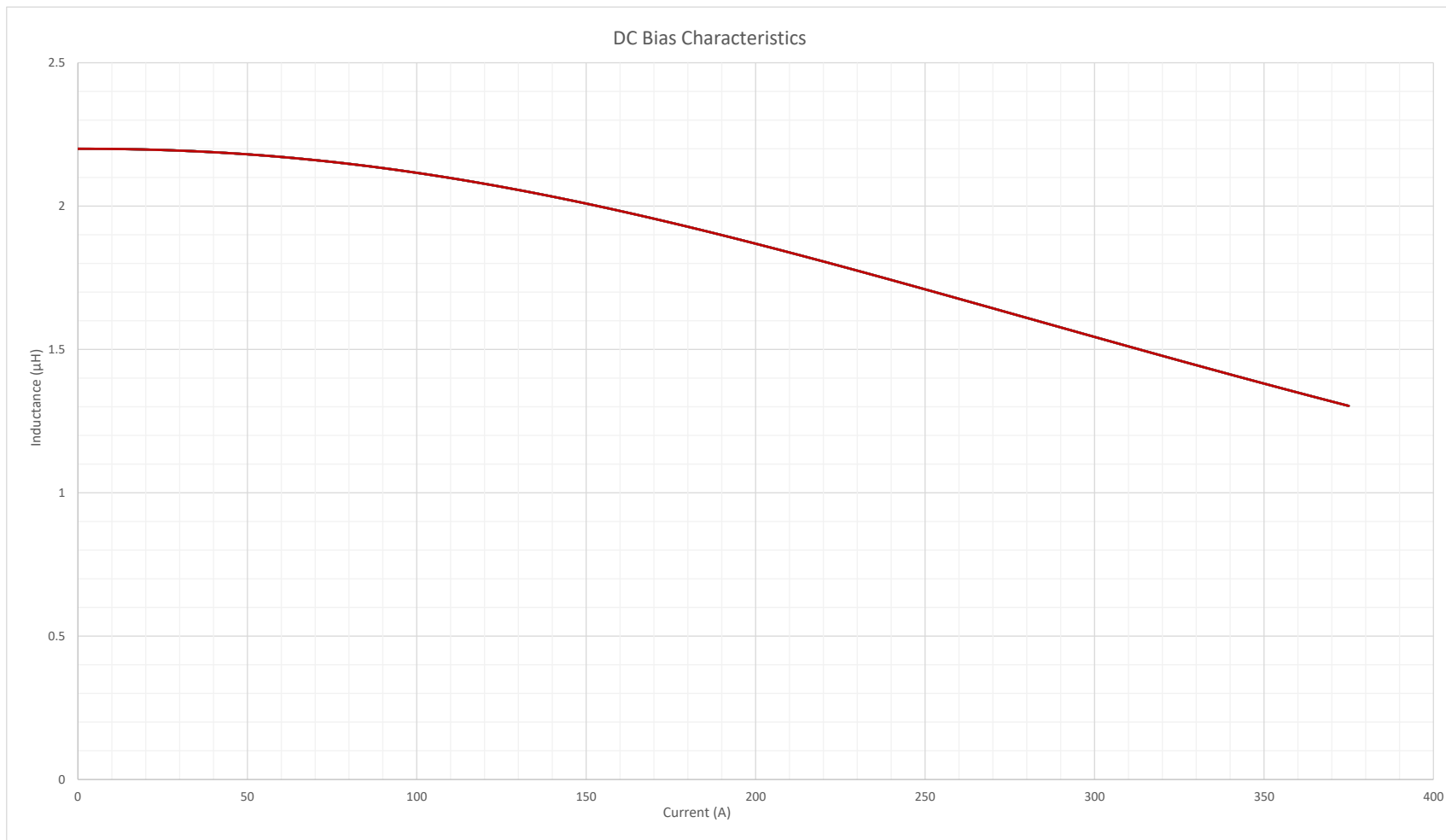
MPS INDUSTRIES, INC.

www.mpsind.com

Tel: (310) 325-1043 Fax: (310) 325-1044

Description		Helical Wound Inductor	
Part Number	HWI4427-122A-2R2H		REV
A	WEIGHT: 190 gms		D
		SHEET: 1 OF 2	

Rev	Description	By	Date
C	Changed Lead length added SRF and Capacitance	KA	31-Aug-18
D	Corrected pin dimensions and DC bias graph	AG	17-Sep-20



Notice of Proprietary Property

These drawings and specifications are the property of MPS and shall not be reproduced, copied or used as the basis of manufacture of sale of apparatus without express written authorization

Dimensions
 Unless otherwise specified
 .XX ± 0.254mm [.010"]
 .XXX ± 0.13mm [.005"]

DRAWN BY:
 CHECKED BY:

MIG
 KC

17-Mar-16
 18-Mar-16

SIZE
A

SCALE: X:X



MPS INDUSTRIES, INC.

www.mpsind.com

Tel: (310) 325-1043 Fax: (310) 325-1044

Description

Helical Wound Inductor

Part Number

HWI4427-122A-2R2H

REV

D

WEIGHT: 190 gms

SHEET: 2 OF 2