

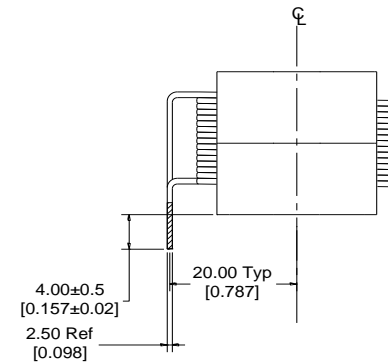
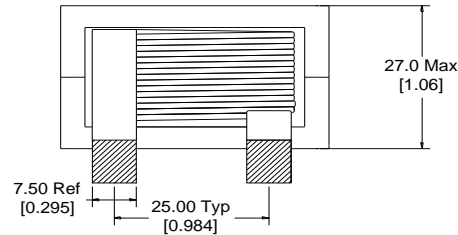
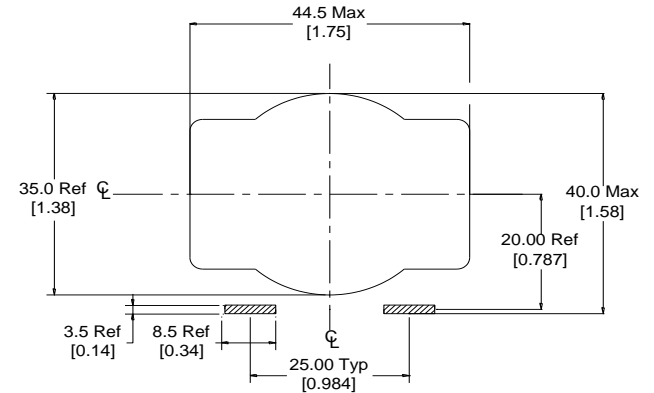
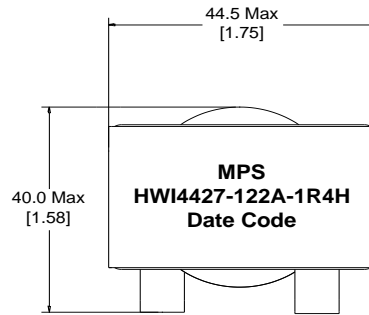
Rev	Description	By	Date
C	Added test data, glass tape, shorten lead length	CF	9-May-18
D	Corrected pin dimensions and DC bias graph	AG	17-Sep-20

ELECTRICAL SPECIFICATIONS @ 25°C

L: 1.4μH±15% @ 10kHz, 1Vrms
 Isat: ΔL≤10% @ 205A
 ΔL≤30% @ 435A
 Irms: ΔT≤20°C @ 80A
 ΔT≤40°C @ 122A
 DCR: 0.4mΩ Max
 SRF: 30 MHz (TYP)
 Capacitance: 22pF (TYP)
 Hipot: 500Vdc, 1mA, 5s, wdg to core
 Insulation Class: Class H 180°C
 RoHS Compliant: Yes

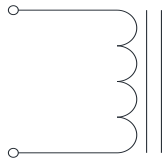
DIMENSIONS

Recommended PCB Layout



Dimensions: mm/[inch]

SCHEMATIC



MARKING

MPS
 HWI4427-122A-1R4H_REV#
 Date Code

Notice of Proprietary Property

These drawings and specifications are the property of MPS and shall not be, reproduced, copied or used as the basis of manufacture of sale of apparatus without express written authorization

Dimensions Unless otherwise specified .XX ± 0.254mm [.010"] .XXX ± 0.13mm [.005"]		DRAWN BY: CHECKED BY:	MIG KC	17-Mar-16 18-Mar-16	SIZE A	Part Number HWI4427-122A-1R4H	REV D
WEIGHT: 190 gms						SHEET: 1 OF 2	



MPS INDUSTRIES, INC.

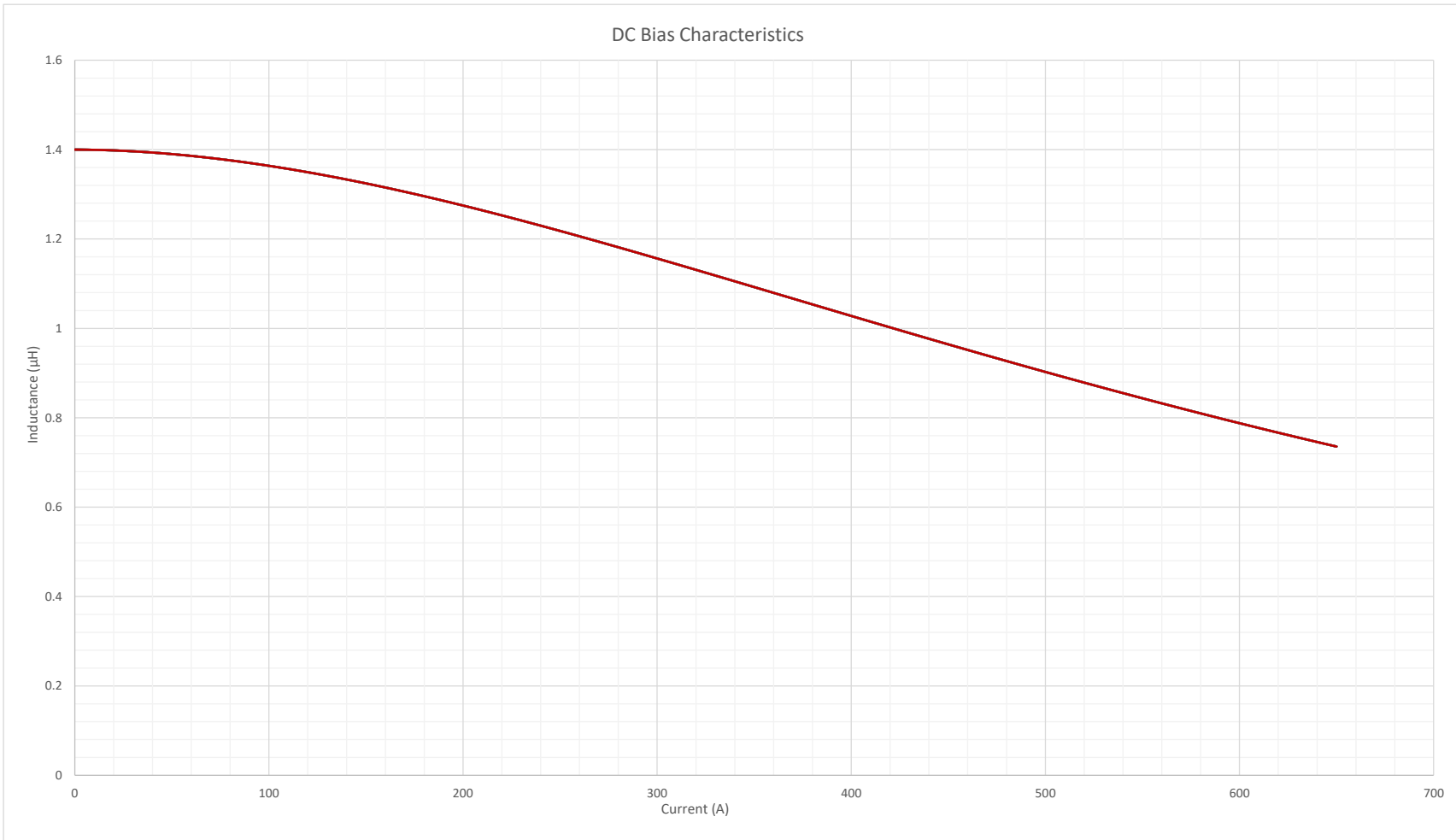
www.mpsind.com

Tel: (310) 325-1043 Fax: (310) 325-1044

Description

Helical Wound Inductor

Rev	Description	By	Date
C	Added test data, glass tape, shorten lead length	CF	9-May-18
D	Corrected pin dimensions and DC bias graph	AG	17-Sep-20



Notice of Proprietary Property

These drawings and specifications are the property of MPS and shall not be reproduced, copied or used as the basis of manufacture of sale of apparatus without express written authorization



MPS INDUSTRIES, INC.

www.mpsind.com

Tel: (310) 325-1043 Fax: (310) 325-1044

Description		Helical Wound Inductor	
Part Number	HWI4427-122A-1R4H		REV
	D		
SCALE: X:X	WEIGHT: 190 gms	SHEET: 2 OF 2	

Dimensions Unless otherwise specified .XX ± 0.254mm [.010"] .XXX ± 0.13mm [.005"]	DRAWN BY: CHECKED BY:	MIG KC	17-Mar-16 18-Mar-16	SIZE A
---	--------------------------	-----------	------------------------	------------------