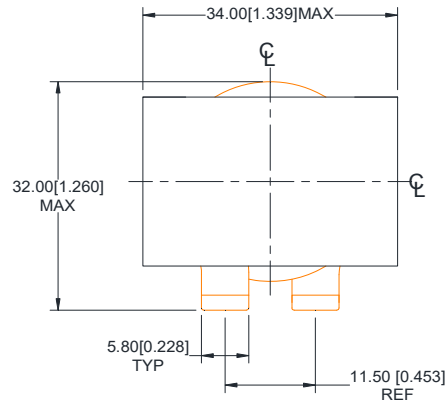


| Rev | Description                             | By  | Date      |
|-----|---|-----|-----------|
| 1   | Preliminary                             | MIG | 12-May-16 |
| A   | Updated electrical & modify part number | KLC | 25-Aug-16 |

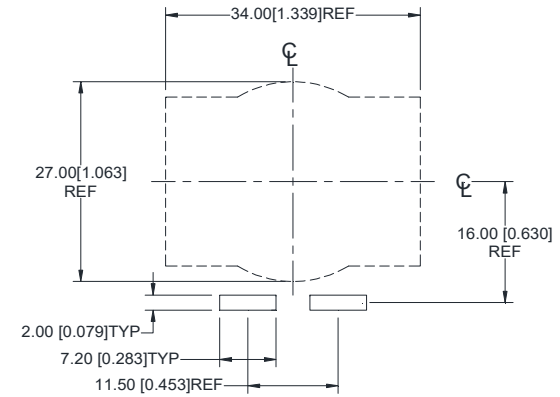
### ELECTRICAL SPECIFICATIONS @ 25°C

L: 19.0  $\mu\text{H} \pm 15\%$  @ 100kHz, 1.0 Vrms  
 Isat:  $\Delta L \leq 10\%$  @ 48 A  
 $\Delta L \leq 20\%$  @ 69 A  
 $\Delta L \leq 30\%$  @ 86 A  
  
 Irms:  $\Delta T \leq 20^\circ\text{C}$  @ 30 A  
 $\Delta T \leq 40^\circ\text{C}$  @ 45 A  
 DCR: 2.6 m $\Omega$  Nom ; 3.4 m $\Omega$  Max  
 SRF (TYP) 17 MHz  
 Capacitance (TYP) 4.60 pF  
 Hipot: 1000 Vdc, 1 mA, 5 sec, wdg to core  
 Insulation Class: Class H 180 °C  
 RoHS Compliant: Yes

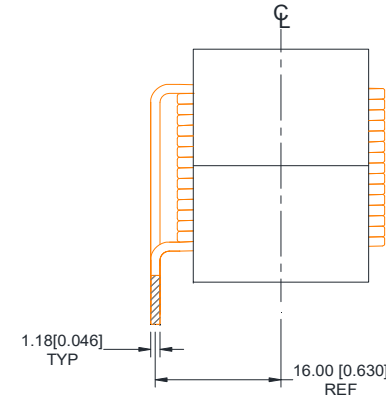
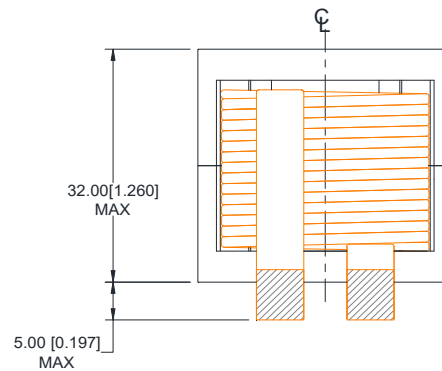
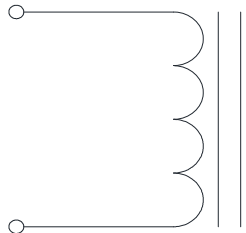
### Dimensions



### Recommended PCB Layout



### SCHEMATIC



### MARKING

MPS  
 HWI3432-045A-190H  
 Rev & Date Code

Notes:  
 Previous PN: HWI3432-041A-190H\_1

#### Notice of Proprietary Property

These drawings and specifications are the property of MPS Industries and shall not be reproduced, copied or used as the basis of manufacture or sale of apparatus without express written authorization from MPS Industries.

|   |                          |           |                       |                  |
|---|--------------------------|-----------|-----------------------|------------------|
| <b>Dimensions: mm[inch]</b><br>Unless otherwise specified<br>.XX $\pm$ 0.51[0.020"]<br>.XXX $\pm$ 0.254[0.010"] | DRAWN BY:<br>CHECKED BY: | MIG<br>AG | 12-May-16<br>6-Jul-16 | SIZE<br><b>A</b> |
|---|--------------------------|-----------|-----------------------|------------------|



MPS INDUSTRIES, INC.

[www.mpsind.com](http://www.mpsind.com)

Tel: (310) 325-1043 Fax: (310) 325-1044

Description

**Helical Wound Inductor, 19  $\mu\text{H}$**

Part Number

**HWI3432-045A-190H**

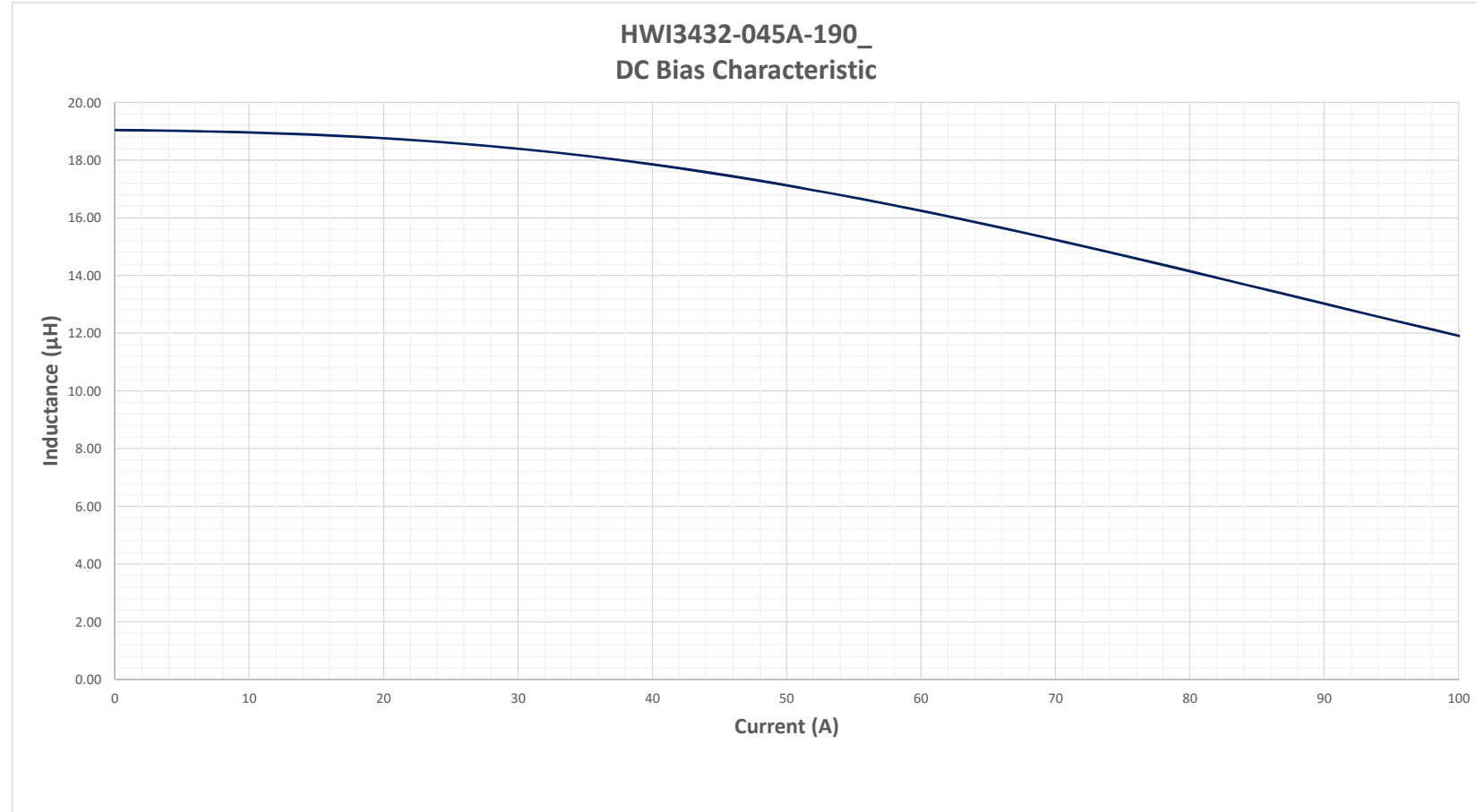
REV

**A**


WEIGHT: 138 gram

SHEET: 1 OF 2

| Rev | Description                             | By  | Date      |
|-----|---|-----|-----------|
| 1   | Preliminary                             | MIG | 12-May-16 |
| A   | Updated electrical & modify part number | KLC | 25-Aug-16 |



**Notice of Proprietary Property**  
 These drawings and specifications are the property of MPS Industries and shall not be reproduced, copied or used as the basis of manufacture or sale of apparatus without express written authorization from MPS Industries.



**MPS INDUSTRIES, INC.**  
[www.mpsind.com](http://www.mpsind.com)  
 Tel: (310) 325-1043 Fax: (310) 325-1044

Description  
**Helical Wound Inductor, 19 µH**

|   |                          |           |                       |                  |
|---|--------------------------|-----------|-----------------------|------------------|
| <b>Dimensions: mm[inch]</b><br>Unless otherwise specified<br>.XX ± 0.51[0.020"]<br>.XXX ± 0.254[0.010"] | DRAWN BY:<br>CHECKED BY: | MIG<br>AG | 12-May-16<br>6-Jul-16 | SIZE<br><b>A</b> |
|---|--------------------------|-----------|-----------------------|------------------|

|   |                 |
|---|-----------------|
| Part Number<br><b>HWI3432-045A-190H</b> | REV<br><b>A</b> |
| SHEET: 2 OF 2                           |                 |