

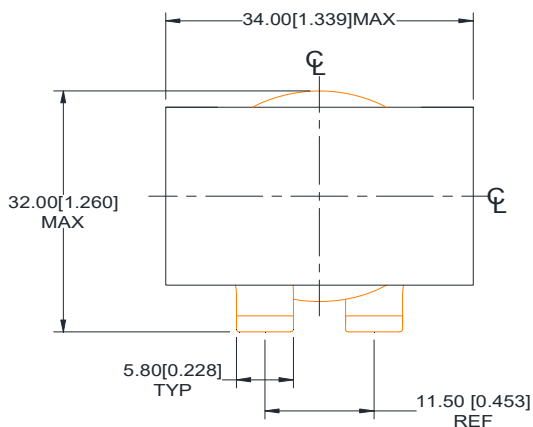
Rev	Description	By	Date
A	Released for Production	KLC	25-Aug-16

ELECTRICAL SPECIFICATIONS @ 25°C

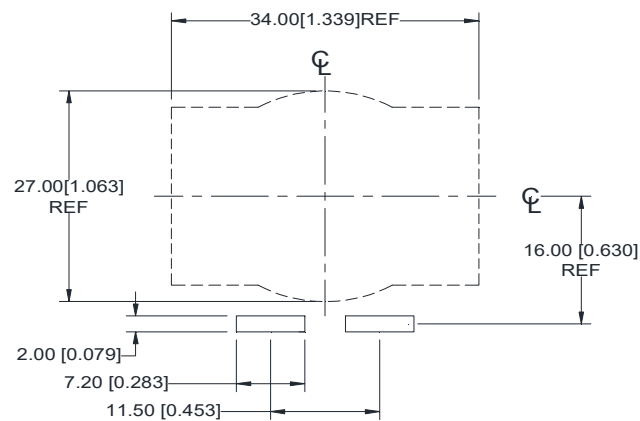
L: 20.0 $\mu\text{H} \pm 15\%$ @ 100kHz, 1.0 Vrms
 Isat: $\Delta L \leq 10\%$ @ 30 A
 $\Delta L \leq 20\%$ @ 43 A
 $\Delta L \leq 30\%$ @ 53 A

 Irms: $\Delta T \leq 20^\circ\text{C}$ @ 31 A
 $\Delta T \leq 40^\circ\text{C}$ @ 47 A
 DCR: 2.1 m Ω Nom ; 2.6 m Ω Max
 SRF (TYP) 18.0 MHz
 Capacitance (TYP) 3.90 pF
 Hipot: 1000 Vdc, 1 mA, 5 sec, wdg to core
 Insulation Class: Class H 180 °C
 RoHS Compliant: Yes

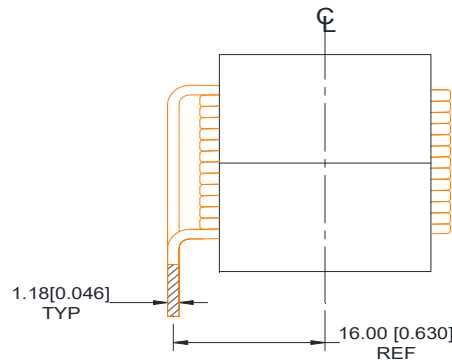
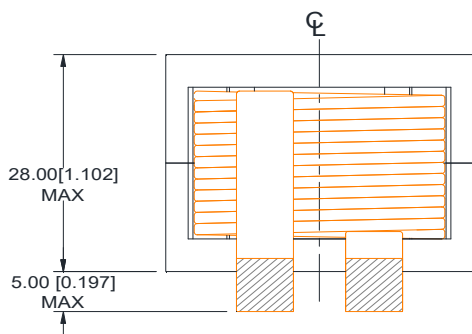
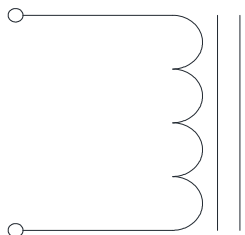
Dimensions



Recommended PCB Layout



SCHEMATIC




MARKING

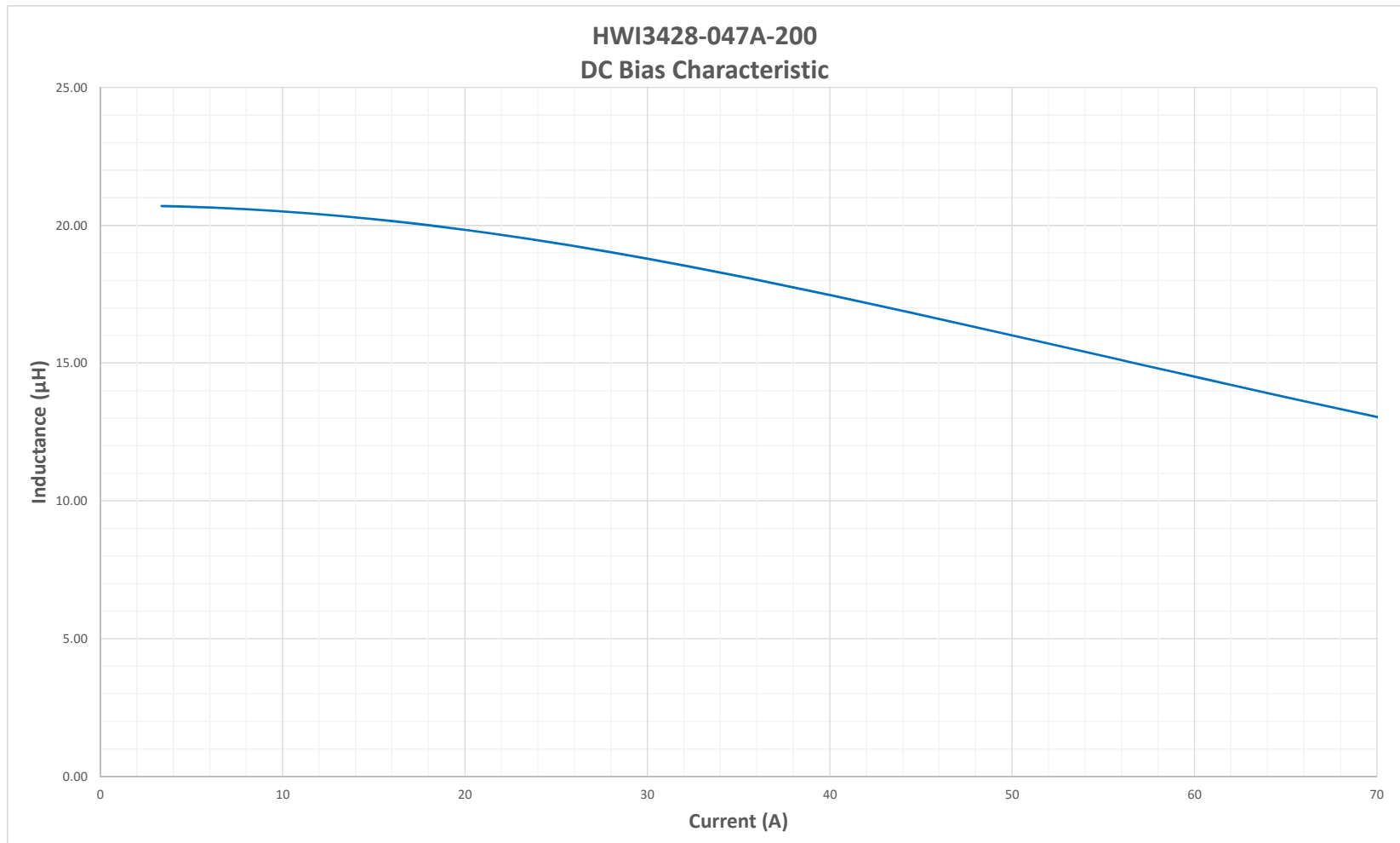
MPS
 HWI3428-047A-200H Rev
 Date Code


Notice of Proprietary Property

These drawings and specifications are the property of MPS and shall not be reproduced, copied or used as the basis of manufacture of sale of apparatus without express written authorization

		MPS INDUSTRIES, INC. www.mpsind.com Tel: (310) 325-1043 Fax: (310) 325-1044	
		Description	
Helical Wound Inductor			
Dimensions: mm[inch] Unless otherwise specified .XX \pm 0.51[0.020"] .XXX \pm 0.254[0.010"]	DRAWN BY: CHECKED BY:	MIG AG	15-Aug-16 25-Aug-16
SIZE A	Part Number HWI3428-047A-200H		REV A
WEIGHT: 130 gram		SHEET: 1 OF 2	

Rev	Description	By	Date
A	Released for Production	KLC	25-Aug-16



Notice of Proprietary Property These drawings and specifications are the property of MPS and shall not be reproduced, copied or used as the basis of manufacture of sale of apparatus without express written authorization						MPS INDUSTRIES, INC. www.mpsind.com Tel: (310) 325-1043 Fax: (310) 325-1044	
				Helical Wound Inductor			
Dimensions: mm[inch] Unless otherwise specified .XX ± 0.51[0.020"] .XXX ± 0.254[0.010"]		DRAWN BY: CHECKED BY:	KLC AG	15-Aug-16 25-Aug-16	SIZE A	Part Number HWI3428-047A-200H	REV A
SHEET: 2 OF 2							