

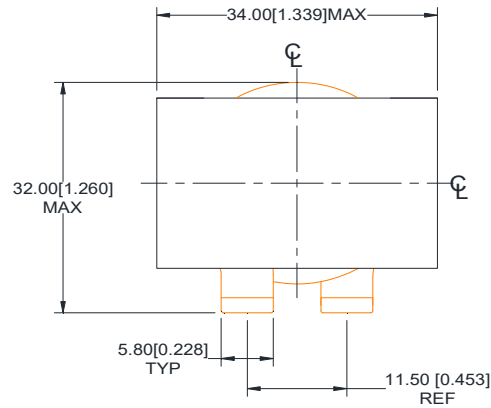
Rev	Description	By	Date
A	Released for Production	KLC	25-Aug-16

ELECTRICAL SPECIFICATIONS @ 25°C

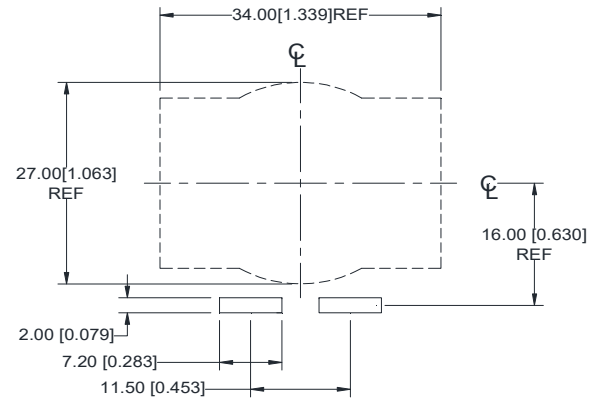
L: 13.0 μ H \pm 15% @ 100kHz, 1.0 Vrms
 Isat: Δ L \leq 10% @ 58 A
 Δ L \leq 20% @ 78 A
 Δ L \leq 30% @ 100 A

 Irms: Δ T \leq 20°C @ 31 A
 Δ T \leq 40°C @ 47 A
 DCR: 2.1 m Ω Nom ; 2.6 m Ω Max
 SRF (TYP) 25 MHz
 Capacitance (TYP) 3.1 pF
 Hipot: 1000 Vdc, 1 mA, 5 sec, wdg to core
 Insulation Class: Class H 180 °C
 RoHS Compliant: Yes

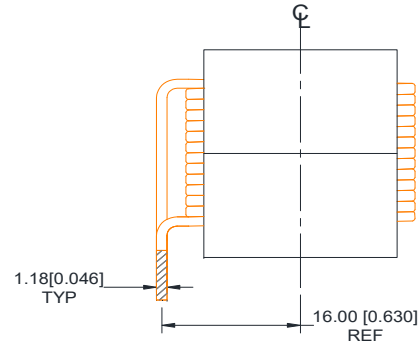
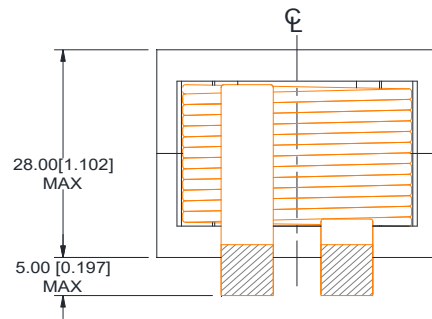
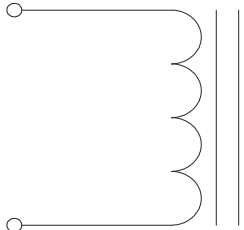
Dimensions



Recommended PCB Layout



SCHEMATIC



MARKING

MPS
 HWI3428-047A-130H Rev
 Date Code

Notice of Proprietary Property

These drawings and specifications are the property of MPS and shall not be reproduced, copied or used as the basis of manufacture of sale of apparatus without express written authorization

Dimensions: mm[inch]
 Unless otherwise specified
 .XX \pm 0.51[0.020"]
 .XXX \pm 0.254[0.010"]

DRAWN BY:
 CHECKED BY:

KLC
 AG
 15-Aug-16
 25-Aug-16

SIZE
A



MPS INDUSTRIES, INC.

www.mpsind.com

Tel: (310) 325-1043 Fax: (310) 325-1044

Description

Helical Wound Inductor

Part Number

HWI3428-047A-130H

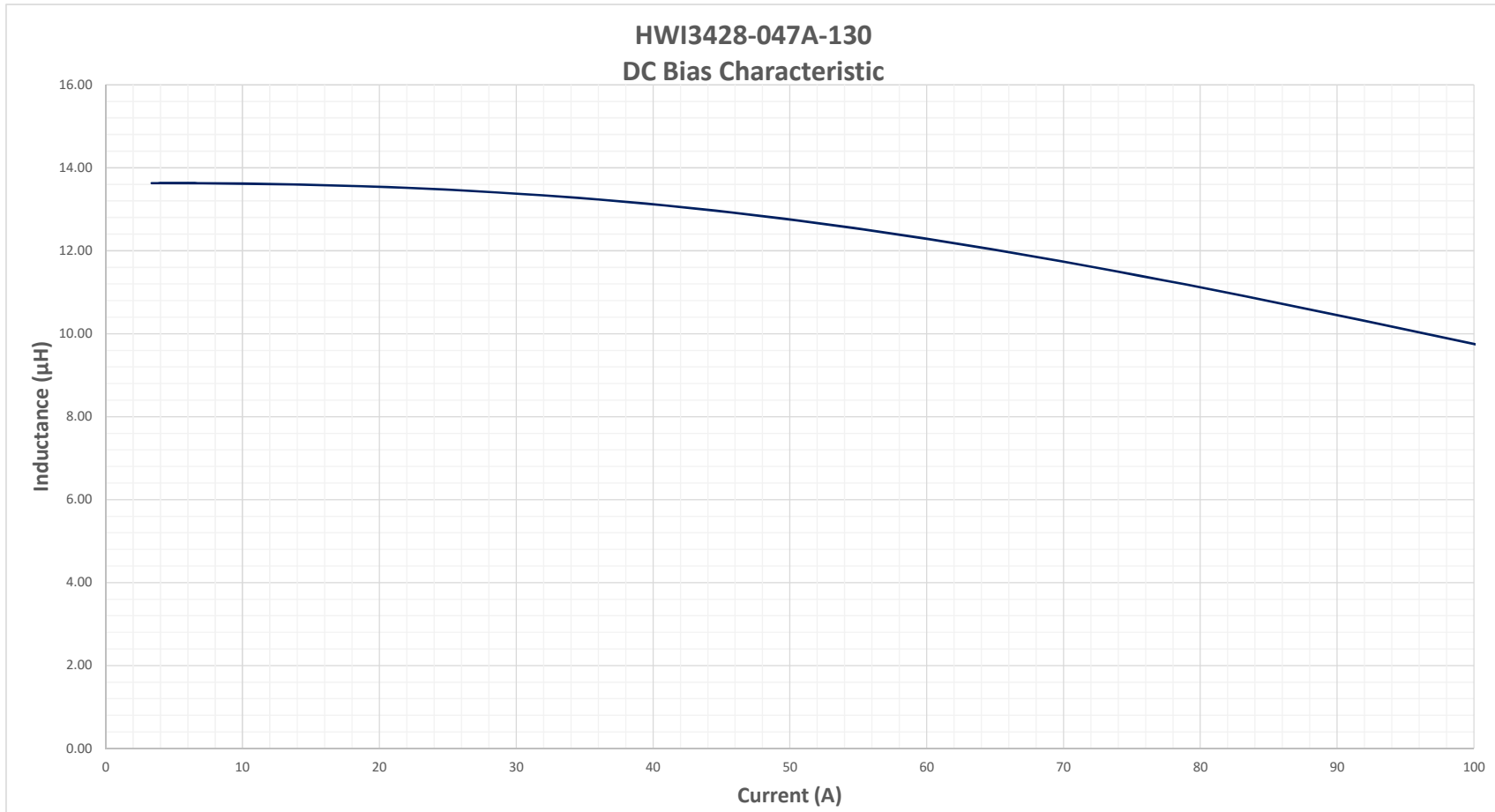
REV

A

WEIGHT: 130 gram

SHEET: 1 OF 2

Rev	Description	By	Date
A	Released for Production	KLC	25-Aug-16



Notice of Proprietary Property

These drawings and specifications are the property of MPS and shall not be reproduced, copied or used as the basis of manufacture of sale of apparatus without express written authorization

Dimensions: mm[inch]

Unless otherwise specified
 .XX ± 0.51[0.020"]
 .XXX ± 0.254[0.010"]

DRAWN BY:
CHECKED BY:

KLC
AG
15-Aug-16
25-Aug-16

SIZE
A



MPS INDUSTRIES, INC.

www.mpsind.com

Tel: (310) 325-1043 Fax: (310) 325-1044

Description

Helical Wound Inductor

Part Number

HWI3428-047A-130H

REV

A