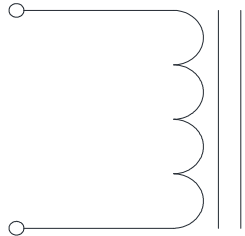


Rev	Description	By	Date
1	Preliminary	MIG	6-Apr-16
2	Changed Wires and Updated BOM	MIG	12-May-16
A	Increase current rating, modify part number and released for Production	KLC	12-Aug-16

### ELECTRICAL SPECIFICATIONS @ 25°C

L:	7.3 $\mu$ H $\pm$ 15% @ 100kHz, 1.0 Vrms
Isat:	$\Delta$ L $\leq$ 10% @ 71 A $\Delta$ L $\leq$ 20% @ 101 A $\Delta$ L $\leq$ 30% @ 126 A
Irms:	$\Delta$ T $\leq$ 20°C @ 36 A $\Delta$ T $\leq$ 40°C @ 55 A
DCR:	1.5 m $\Omega$ Nom ; 1.9 m $\Omega$ Max
SRF (TYP)	26 MHz
Capacitance (TYP)	5.10 pF
Hipot:	1000 Vdc, 1 mA, 5 sec, wdg to core
Insulation Class:	Class H 180 °C
RoHS Compliant:	Yes

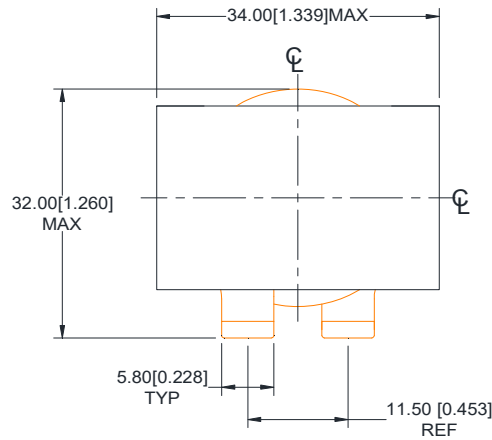
### SCHEMATIC



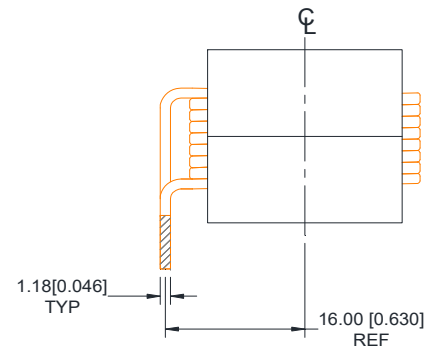
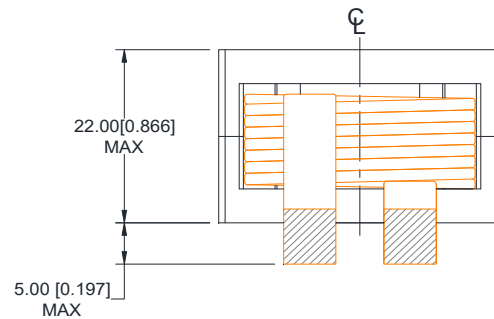
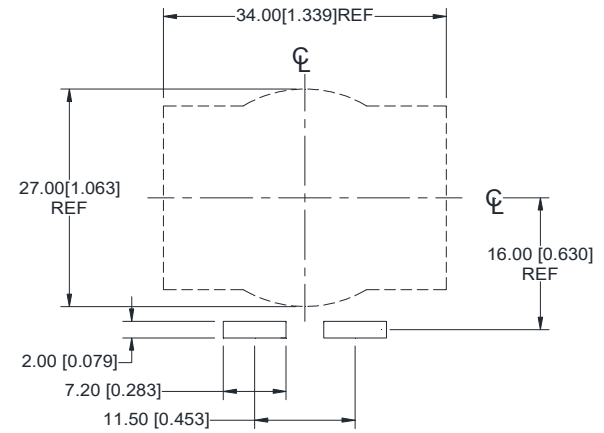
### MARKING

MPS  
HWI3422-055A-7R3H Rev  
Date Code

### Dimensions



### Recommended PCB Layout



#### Notice of Proprietary Property

These drawings and specifications are the property of MPS and shall not be reproduced, copied or used as the basis of manufacture of sale of apparatus without express written authorization

<b>Dimensions: mm [inch]</b> Unless otherwise specified .XX $\pm$ 0.51[0.020"] .XXX $\pm$ 0.254[0.010"]		DRAWN BY: CHECKED BY:	MIG AG	6-Apr-16 11-Apr-16	SIZE <b>A</b>	Part Number <b>HWI3422-055A-7R3H</b>	REV <b>A</b>
WEIGHT: 100 gram						SHEET: 1 OF 2	



MPS INDUSTRIES, INC.

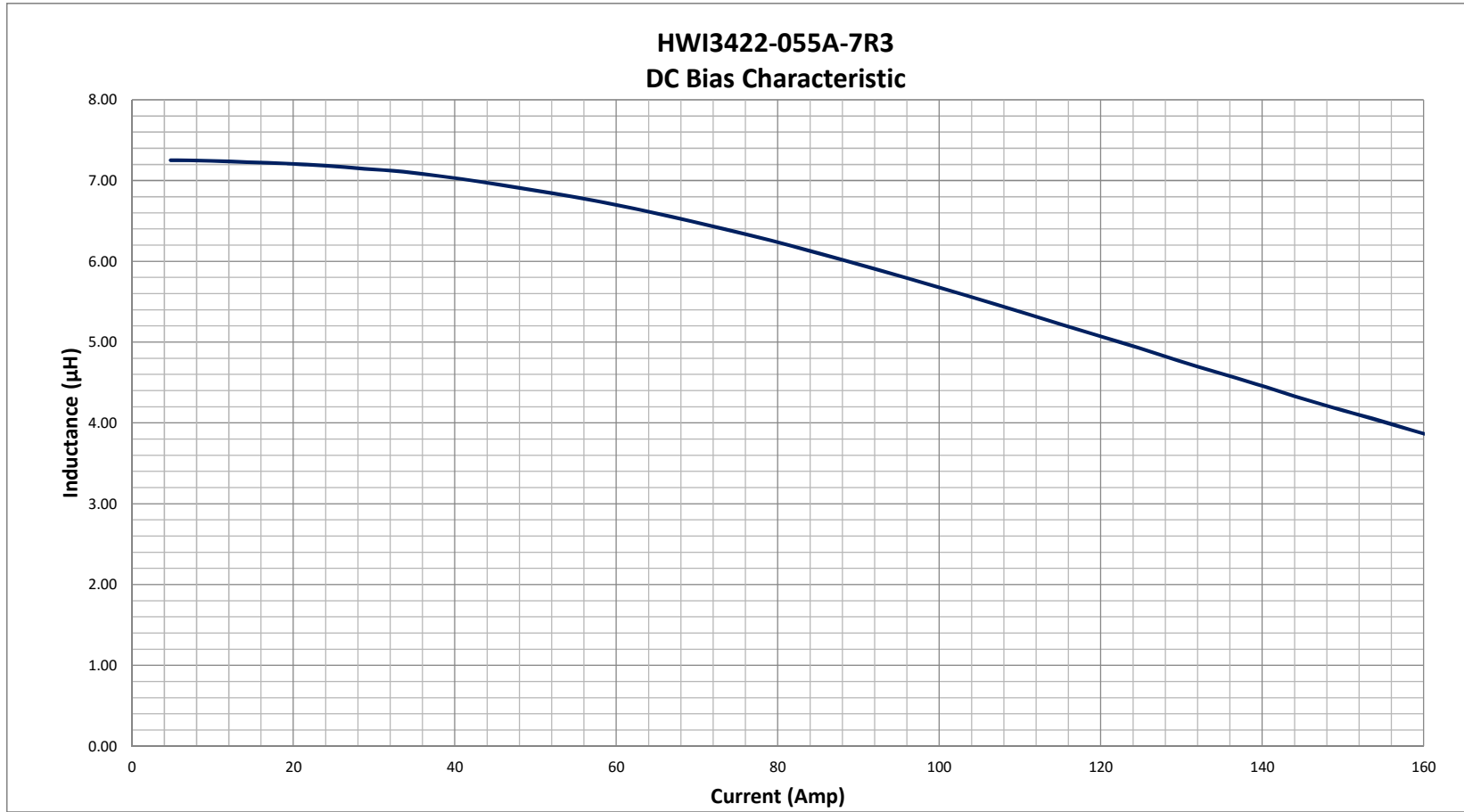
[www.mpsind.com](http://www.mpsind.com)

Tel: (310) 325-1043 Fax: (310) 325-1044

Description

**Helical Wound Inductor**

Rev	Description	By	Date
1	Preliminary	MIG	6-Apr-16
2	Changed Wires and Updated BOM	MIG	12-May-16
A	Increase current rating, modify part number and released for Production	KLC	12-Aug-16



**Notice of Proprietary Property**

These drawings and specifications are the property of MPS and shall not be reproduced, copied or used as the basis of manufacture or sale of apparatus without express written authorization

<p><b>Dimensions</b> Unless otherwise specified .XX ± 0.51[0.020"] .XXX ± 0.254[0.010"]</p>	<p>DRAWN BY: KLC</p>	<p>CHECKED BY: AG</p>	<p>6-Apr-16</p>	<p>11-Apr-16</p>	<p>SIZE <b>A</b></p>	<p>Description <b>Helical Wound Inductor</b></p>	<p>Part Number <b>HWI3422-055A-7R3H</b></p>	<p>REV <b>A</b></p>
	SHEET: 2 OF 2							



MPS INDUSTRIES, INC.

[www.mpsind.com](http://www.mpsind.com)

Tel: (310) 325-1043 Fax: (310) 325-1044