

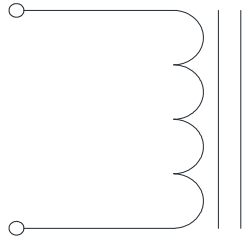
Rev	Description	By	Date
1	Preliminary	MIG	6-Apr-16
2	Changed Wires and Updated BOM	MIG	12-May-16
A	Increase current rating, and released for Production	KLC	12-Aug-16

ELECTRICAL SPECIFICATIONS @ 25°C

L: 4.7 $\mu\text{H} \pm 15\%$ @ 100kHz, 1.0 Vrms
Isat: $\Delta L \leq 10\%$ @ > 120 A
 $\Delta L \leq 20\%$ @ > 150 A
 $\Delta L \leq 30\%$ @ > 180 A

Irms: $\Delta T \leq 20^\circ\text{C}$ @ 36 A
 $\Delta T \leq 40^\circ\text{C}$ @ 55 A
DCR: 1.5 m Ω Nom ; 1.9 m Ω Max
SRF (TYP) 36 MHz
Capacitance (TYP) 4.00 pF
Hipot: 1000 Vdc, 1 mA, 5 sec, wdg to core
Insulation Class: Class H 180 °C
RoHS Compliant: Yes

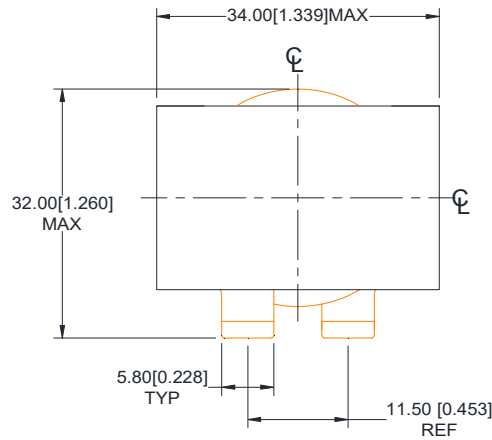
SCHEMATIC



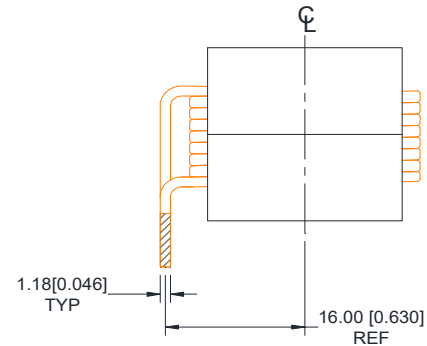
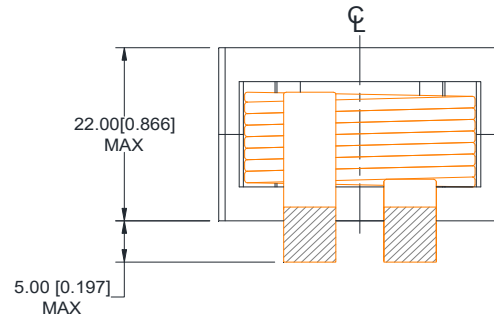
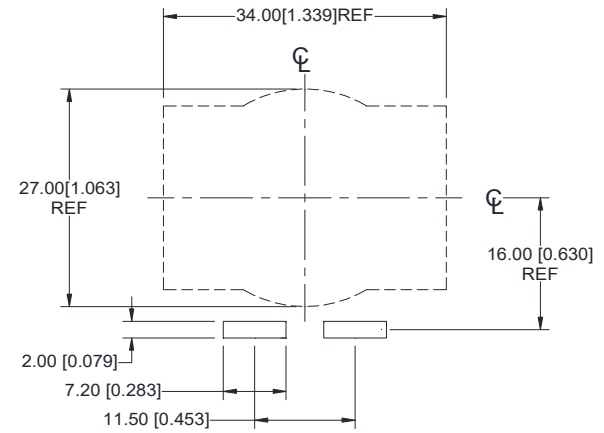
MARKING

MPS
 HWI3422-055A-4R7H Rev
 Date Code

Dimensions



Recommended PCB Layout



Notice of Proprietary Property

These drawings and specifications are the property of MPS and shall not be reproduced, copied or used as the basis of manufacture of sale of apparatus without express written authorization

Dimensions: mm [inch] Unless otherwise specified .XX \pm 0.51[0.020"] .XXX \pm 0.254[0.010"]		DRAWN BY: CHECKED BY:	MIG AG	6-Apr-16 11-Apr-16	SIZE A	Part Number HWI3422-055A-4R7H	REV A
WEIGHT: 100 gram						SHEET: 1 OF 2	



MPS INDUSTRIES, INC.

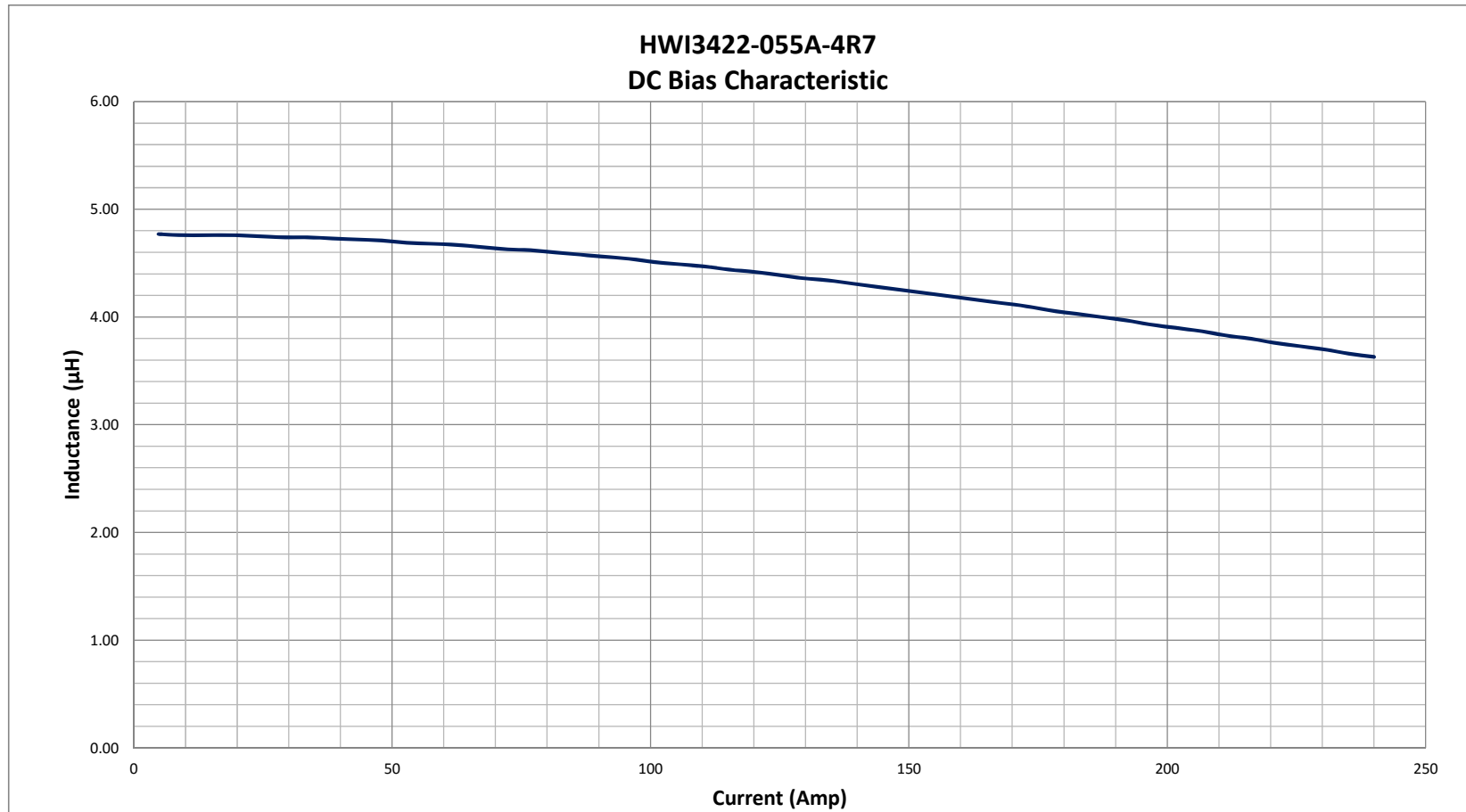
www.mpsind.com

Tel: (310) 325-1043 Fax: (310) 325-1044

Description

Helical Wound Inductor

Rev	Description	By	Date
1	Preliminary	MIG	6-Apr-16
2	Changed Wires and Updated BOM	MIG	12-May-16
A	Increase current rating, and released for Production	KLC	12-Aug-16



Notice of Proprietary Property

These drawings and specifications are the property of MPS and shall not be reproduced, copied or used as the basis of manufacture or sale of apparatus without express written authorization

<p>Dimensions Unless otherwise specified .XX ± 0.51[0.020"] .XXX ± 0.254[0.010"]</p>		<p>DRAWN BY: CHECKED BY:</p>	<p>KLC AG</p>	<p>6-Apr-16 11-Apr-16</p>	<p>SIZE A</p>	<p>Description Helical Wound Inductor</p>	<p>Part Number HWI3422-055A-4R7H</p>	<p>REV A</p>
SHEET: 2 OF 2								



MPS INDUSTRIES, INC.

www.mpsind.com

Tel: (310) 325-1043 Fax: (310) 325-1044