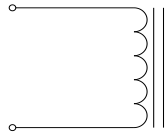


| Rev | Description             | By | Date      |
|-----|-------------------------|----|-----------|
| A   | Released for production | AG | 30-Dec-19 |

**ELECTRICAL SPECIFICATIONS @ 25°C**

L: 160μH±15% @ 100kHz, 1Vrms  
 Isat: ΔL≤10% @ 22A  
 ΔL≤20% @ 32A  
 ΔL≤30% @ 42A  
 Irms: ΔT≤20°C @ 26.5A  
 ΔT≤40°C @ 40.5A  
 DCR: 9mΩ Max  
 SRF: 3.5MHz Typ  
 Hipot: 2kVdc, 1mA Max, 10s (wdg to case)  
 RoHS Compliant: Yes

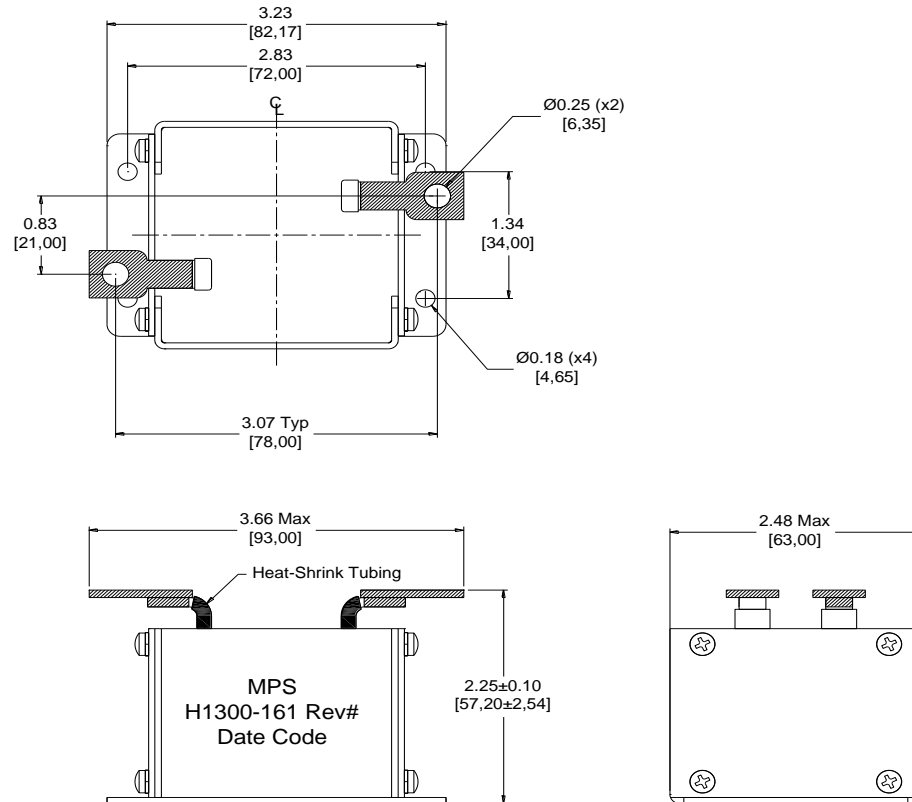
**SCHEMATIC**



**MARKING**

MPS  
 H1300-161 Rev#  
 Date Code

**DIMENSIONS**



Dimensions: inch/[mm]



MPS INDUSTRIES, INC.

[www.mpsind.com](http://www.mpsind.com)

Tel: (310) 325-1043 Fax: (310) 325-1044

**Notice of Proprietary Property**

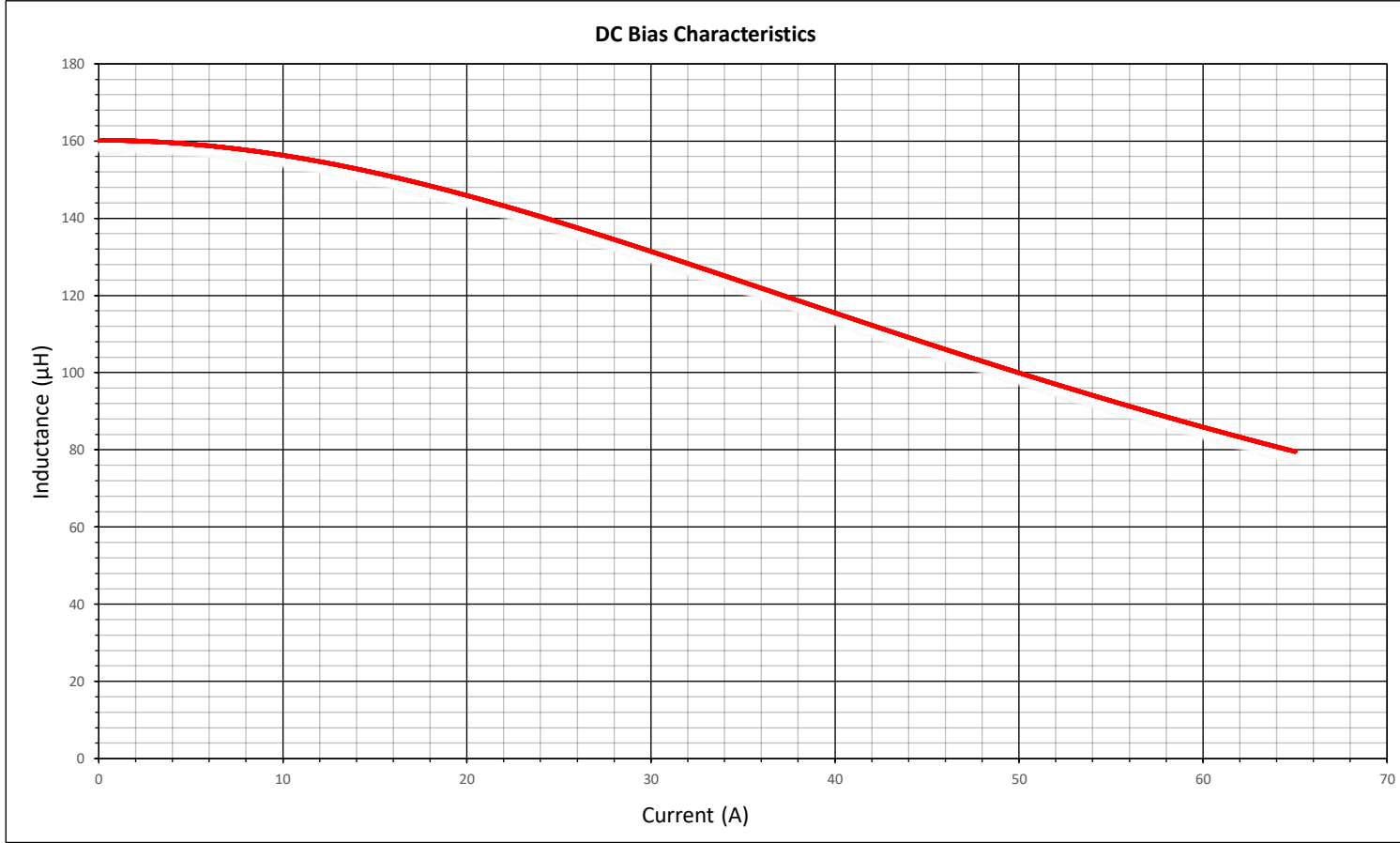
These drawings and specifications are the property of MPS and shall not be, reproduced, copied or used as the basis of manufacture of sale of apparatus without express written authorization

Description


**High Power Inductor**

|  |                          |          |                        |                  |                                 |                 |
|--|--------------------------|----------|------------------------|------------------|---------------------------------|-----------------|
| <b>Dimensions</b><br>Unless otherwise specified<br>.XX ± .010" [0,254mm]<br>.XXX ± .005 [0,13mm] | DRAWN BY:<br>CHECKED BY: | AG<br>AG | 30-Dec-19<br>30-Dec-19 | SIZE<br><b>A</b> | Part Number<br><b>H1300-161</b> | REV<br><b>A</b> |
| WEIGHT: XX gms   |                          |          |                        |                  | SHEET: 1 OF 2                   |                 |

| Rev | Description             | By | Date      |
|-----|-------------------------|----|-----------|
| A   | Released for production | AG | 30-Dec-19 |



**Notice of Proprietary Property**  
 These drawings and specifications are the property of MPS and shall not be, reproduced, copied or used as the basis of manufacture of sale of apparatus without express written authorization



**MPS INDUSTRIES, INC.**  
 www.mpsind.com  
 Tel: (310) 325-1043 Fax: (310) 325-1044

Description  
**High Power Inductor**

|  |                          |          |                        |                  |
|--|--------------------------|----------|------------------------|------------------|
| <b>Dimensions</b><br>Unless otherwise specified<br>.XX ± .010" [0,254mm]<br>.XXX ± .005 [0,13mm] | DRAWN BY:<br>CHECKED BY: | AG<br>AG | 30-Dec-19<br>30-Dec-19 | SIZE<br><b>A</b> |
|--|--------------------------|----------|------------------------|------------------|

|                                 |                 |
|---------------------------------|-----------------|
| Part Number<br><b>H1300-161</b> | REV<br><b>A</b> |
| SCALE: X:X                      | WEIGHT: XX gms  |
| SHEET: 2 OF 2                   |                 |