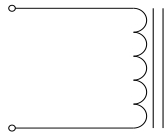


Rev	Description	By	Date
B	Updated enclosure and changed lead location	MIG	11-Apr-16
C	Updated inductance to +/-15%	AG	30-Dec-19

ELECTRICAL SPECIFICATIONS @ 25°C

L: 150μH±15% @ 100kHz, 1Vrms
 Isat: ΔL≤10% @ 23A
 ΔL≤20% @ 34A
 ΔL≤30% @ 44A
 Irms: ΔT≤20°C @ 27A
 ΔT≤40°C @ 41A
 DCR: 8.7mΩ Max
 SRF: 4.4MHz Typ
 Hipot: 2kVdc, 1mA Max, 10s (wdg to case)
 RoHS Compliant: Yes

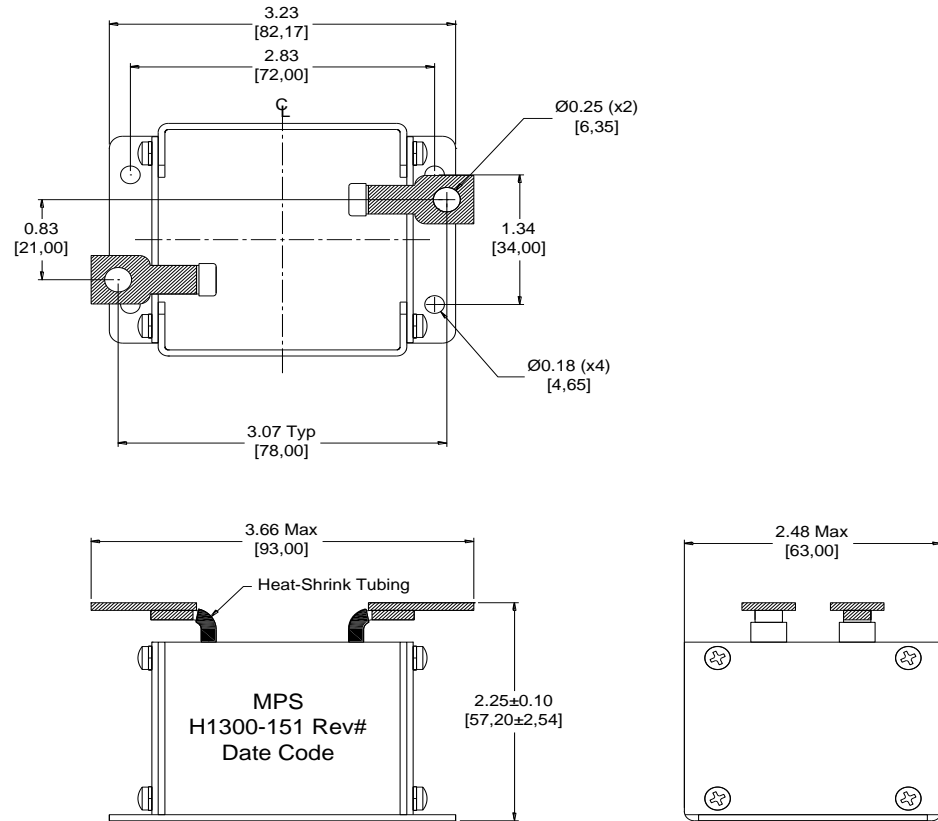
SCHEMATIC



MARKING

MPS
 H1300-151 Rev#
 Date Code

DIMENSIONS



Dimensions: inch/[mm]



MPS INDUSTRIES, INC.

www.mpsind.com

Tel: (310) 325-1043 Fax: (310) 325-1044

Notice of Proprietary Property

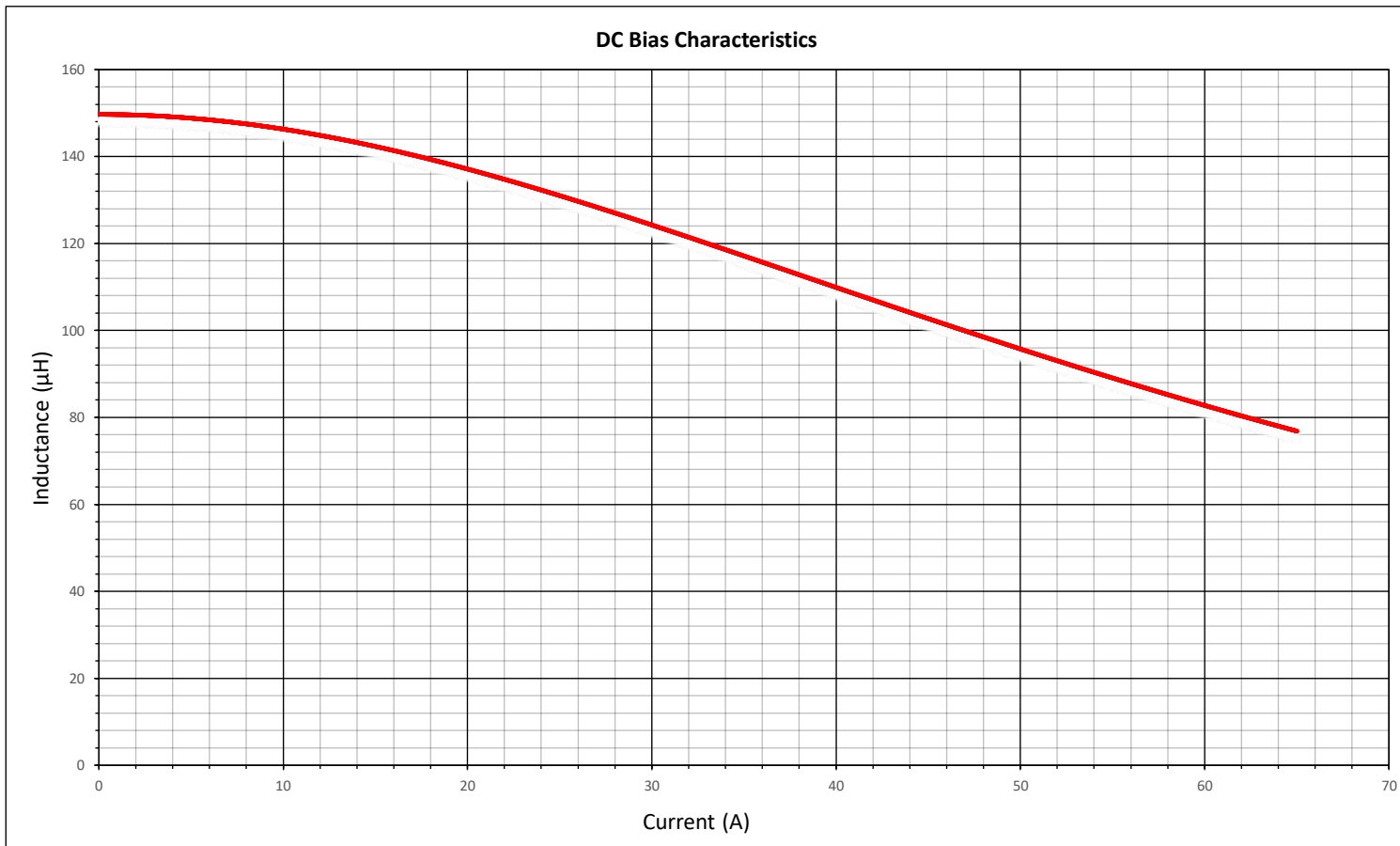
These drawings and specifications are the property of MPS and shall not be, reproduced, copied or used as the basis of manufacture of sale of apparatus without express written authorization

Description


High Power Inductor

Dimensions	DRAWN BY:	AG	1-Sep-15	SIZE	Part Number	REV
Unless otherwise specified .XX ± .010" [0,254mm] .XXX ± .005 [0,13mm]	CHECKED BY:	AG	1-Sep-15	A	H1300-151	C
WEIGHT: XX gms					SHEET: 1 OF 2	

Rev	Description	By	Date
B	Updated enclosure and changed lead location	MIG	11-Apr-16
C	Updated inductance to +/-15%	AG	30-Dec-19



Notice of Proprietary Property
 These drawings and specifications are the property of MPS and shall not be, reproduced, copied or used as the basis of manufacture of sale of apparatus without express written authorization



MPS INDUSTRIES, INC.
 www.mpsind.com
 Tel: (310) 325-1043 Fax: (310) 325-1044

Description
High Power Inductor

Dimensions Unless otherwise specified .XX ± .010" [0,254mm] .XXX ± .005 [0,13mm]	DRAWN BY: CHECKED BY:	AG AG	1-Sep-15 1-Sep-15	SIZE A	Part Number H1300-151	REV C
--	--------------------------	----------	----------------------	------------------	---------------------------------	-----------------

SCALE: X:X WEIGHT: XX gms SHEET: 2 OF 2