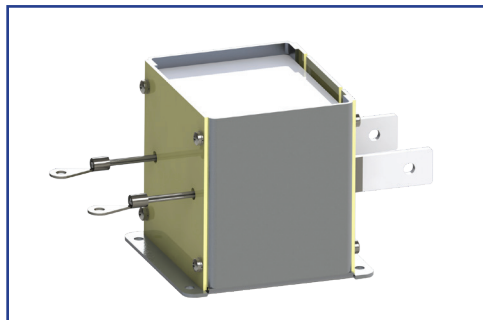


# DUAL ACTIVE BRIDGE (DAB) PSFB TRANSFORMER



E6526



- Ideally suited for Dual Active Bridge (DAB) or Phase Shifted Full Bridge Transformer applications
- High efficiency and cost effective design and construction
- Operating Temperature -40°C to +125°C
- Suggested Cooling: Heat Sink or 120LFM Force Air
- RoHS Compliant Product
- Custom Design Available

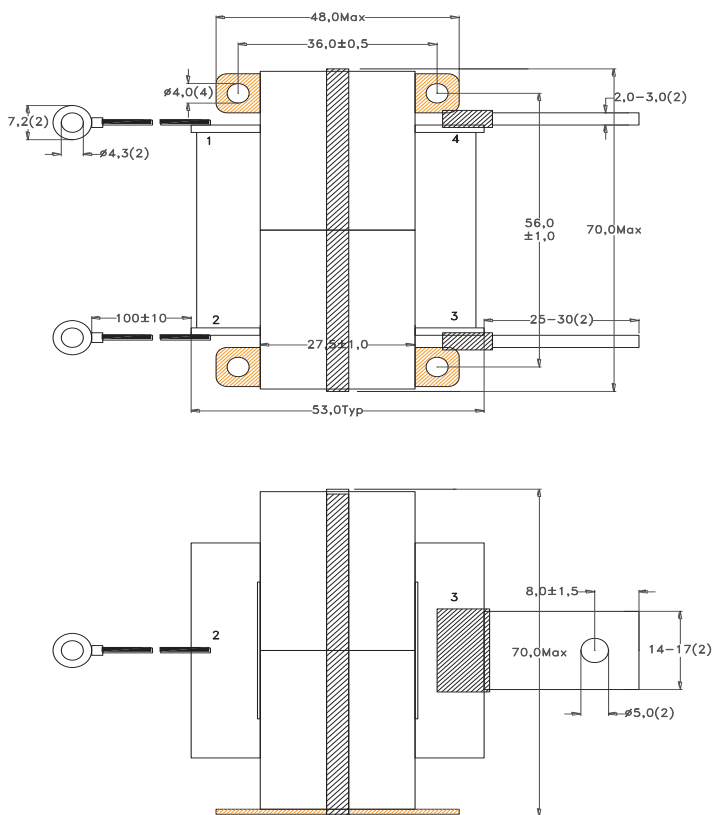
## ELECTRICAL PARAMETERS @ 25°C

Part Number	Input $V_{DC}$	Output $V_{DC}$	Output $A_{DC}$ Max	Switching Frequency KHz	Output Power Watts Max	Lp (1-2) mH Min	L <sub>L</sub> (1-2) $\mu$ H Max	DCR (1-2) m $\Omega$ Max	DCR (3-4) m $\Omega$ Max	Turns Ratio (1-2 : 4-3) $\pm$ 3%
E6526	200 - 240	20 - 33	120	100	3000	1.16	10.0	25.0	1.00	7 : 1

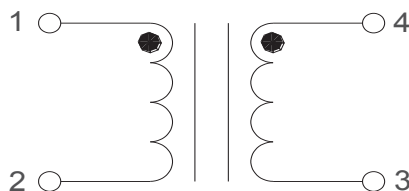
**Note:**

1. Lp: Measured @ 10KHz, 0.1V<sub>RMS</sub>
2. L<sub>L</sub>: Measured @ 100KHz, 0.1V<sub>RMS</sub> (With 3-4 shorted)
3. Polarity: 1 and 4 are in phase
4. Hipot (1-2 to 3-4): 2KV<sub>RMS</sub>, 1mA, 10S
5. Hipot (wdgs to core): 2KV<sub>RMS</sub>, 1mA, 10S

## DIMENSIONS (mm)



## SCHEMATIC



Revised 1/15/2019

Product performance is limited to specified parameters. Data is subject to change without prior notice.

Tel: 310-325-1043  
Fax: 310-325-1044

www.mpsind.com  
sales@mpsind.com