

Rev	Description	By	Date
2	Change turns ratio and adjust inductance per email 4/16/20	TC	16-Apr-20
3	Update dimension per sample result	TC	28-May-20

ELECTRICAL SPECIFICATIONS @ 25°C

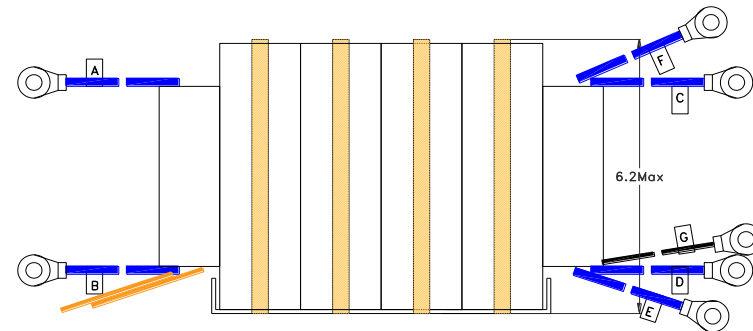
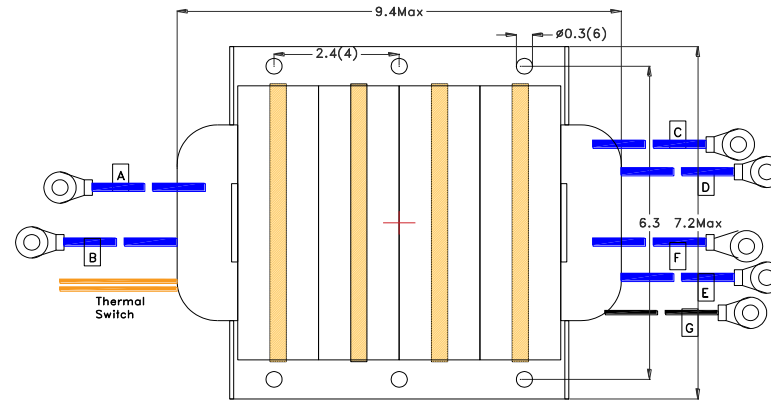
Input (A-B): 650V_{RMS}, 20KHz Sine wave
 Output (C-D, E-F): 2x270V_{RMS}, 76KW Max

OCL (A-B): 1.0mH ±10% @ 10KHz, 0.1V_{RMS}
 Leakage L (A-B): 50µH Max (TBD) @ 100KHz, 0.1V_{RMS}
 (with all other wdg's shorted)

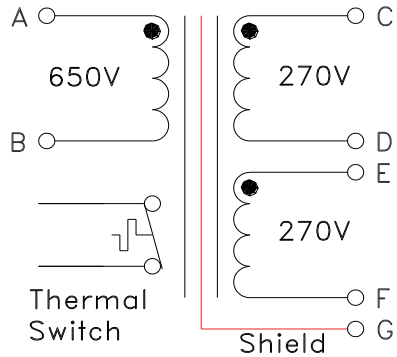
Turns Ratio: 9 : 4 : 4 ±3% (A-B : C-D : E-F)
 Polarity: A, C and E are in phase
 Hipot: 3332V_{DC}, No break down
 (wdgs & thermalcopule to core & shield)
 (Thermal switch to wdg's, A-B to C,D,E,F)

Construction Comply: UL1012
 Cooling: Heat Sink and 120LFM force air
 Operating Temp: -40°C to + 125°C

DIMENSIONS



SCHEMATIC



MARKING

MPS E6306
 MFR 4GQP2
 DATE CODE

Leads	Length ±0.3"	Terminal Holes	Terminal Width
A, B	12"	7/16 Stud	0.9" Max
C, D, E, F	10"	7/16 Stud	0.9" Max
G	12"	#10 Stud	0.5" Max
Thermal switch	12"	160°C	Normal close

C of C for each shipment

Notice of Proprietary Property			
These drawings and specifications are the property of MPS and shall not be, reproduced, copied or used as the basis of manufacture of sale of apparatus without express written authorization			
Dimensions Unless otherwise specified .XX ± .010" [0,254mm] .XXX ± .005 [0,13mm]	DRAWN BY: CHECKED BY:	TC TC	28-May-20 28-May-20

Dimensions: in		MPS INDUSTRIES, INC. www.mpsind.com Tel: (310) 325-1043 Fax: (310) 325-1044	
Description		76KW TRANSFORMER	
Part Number	E6306	REV	3
WEIGHT: XX gms		SHEET: 1 OF 1	