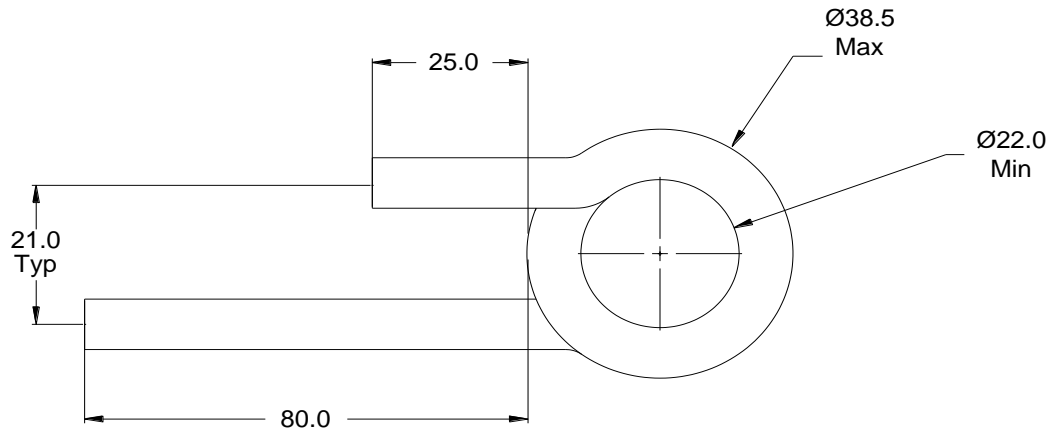


Rev	Description	By	Date
1	Preliminary	MIG	30-Mar-16
2	Extended bottom lead to 80mm	SO	3-Aug-22

Base

305-200075-220-15



Dimensions: mm

Base Materials: [2.00mm x 7.50mm Wire](#)

DCR:
Turns Number: 15T
Insulation Class: Class K MIN, 200°C
RoHS Compliant: Yes

Notice of Proprietary Property

These drawings and specifications are the property of MPS and shall not be, reproduced, copied or used as the basis of manufacture of sale of apparatus without express written authorization

Dimensions Unless otherwise specified .XX ± .010" [0,254mm] .XXX ± .005" [0,13mm]	DRAWN BY: CHECKED BY:	MIG SO	30-Mar-16 3-Aug-22	SIZE A
---	--------------------------	-----------	-----------------------	------------------



MPS INDUSTRIES, INC.

www.mpsind.com

Tel: (310) 325-1043 Fax: (310) 325-1044

Description

HEW Coil, 2.00mm x 7.50mm Ø 22.0 mm 15 Turns

Part Number

305-200075-220-15

REV

2

WEIGHT: XX gms

SHEET: 1 OF 1